



# Ersatzteilliste / Spare parts list

PFT Mischpumpe / Mixing pump RITMO XL



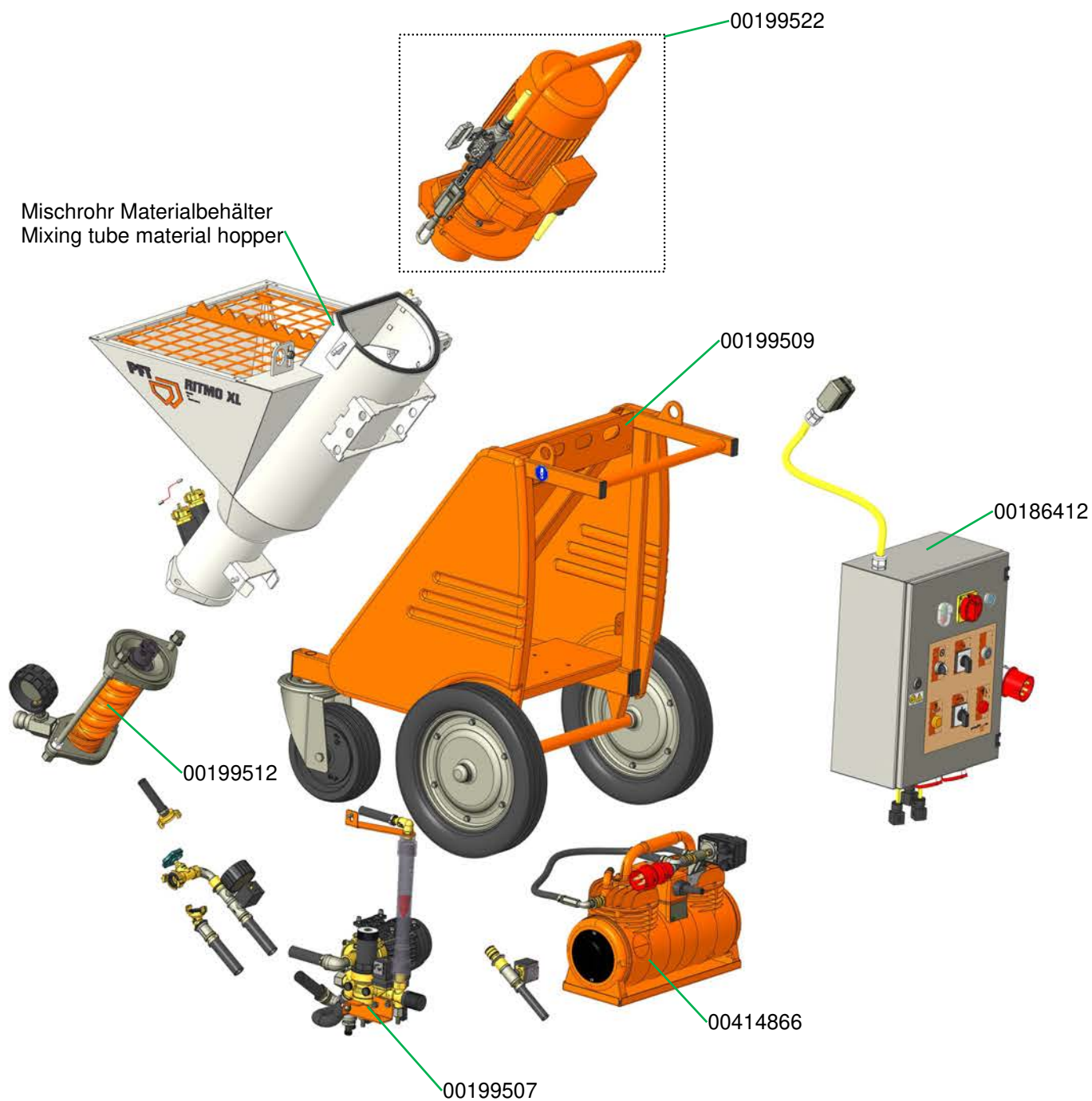
| Art.-Nr. / part number | Benennung  | Designation   |
|------------------------|--|---|
| 00186478               | RITMO XL, 400 V, 3 Ph, 50 Hz                         | RITMO XL, 400 V, 3 Ph, 50 Hz                          |
| 00197819               | RITMO XL FC-230V, 1 Ph, 50 Hz                        | RITMO XL FC-230V, 1 Ph, 50 Hz                         |
| 00197821               | RITMO XL FC-230/400V, 1/3 Ph, 50 Hz                  | RITMO XL FC-230/400V, 1/3 Ph, 50 Hz                   |
| 00231496               | RITMO XL FC-230/400V, 1/3 Ph, 50 Hz geothermie       | RITMO XL FC-230/400V, 1/3 Ph, 50 Hz geothermal energy |
| 00235811               | RITMO XL FC-230/400V, 1/3 Ph, 50 Hz mit ZARGOMAT pro | RITMO XL FC-230/400V, 1/3 Ph, 50 Hz with ZARGOMAT pro |
| 00271454               | RITMO XL, 230 V, 3 Ph, 60 Hz                         | RITMO XL, 230 V, 3 Ph, 60 Hz                          |
| 00595459               | RITMO XL, 400 V, 3 Ph, 50 Hz (Buildtech)             | RITMO XL, 400 V, 3 Ph, 50 Hz (Buildtech)              |

|   |    |
|---|----|
| Übersicht RITMO XL FC 400V, 3 Ph, 50 Hz Art.-Nr. 00186478 .....                           | 6  |
| Overview RITMO XL FC 400V, 3 Ph, 50 Hz part number 00186478.....                          | 6  |
| Übersicht RITMO XL FC-230V, 1 Ph, 50 Hz Art.-Nr. 00197819 .....                           | 7  |
| Overview RITMO XL FC-230V, 1 Ph, 50 Hz part number 00197819.....                          | 7  |
| Übersicht RITMO XL FC 230/400V 1/3 Ph, 50 Hz Art.-Nr. 00197821 .....                      | 8  |
| Overview RITMO XL FC 230/400V 1/3 Ph, 50 Hz part number 00197821 .....                    | 8  |
| Übersicht RITMO XL FC-230/400V, 1/3 Ph, 50 Hz geothermie Art.-Nr. 00231496.....           | 9  |
| Overview RITMO XL FC-230/400V, 1/3 Ph, 50 Hz geothermal energy part number 00231496 ..... | 9  |
| Übersicht RITMO XL 230 V, 3 Ph, 60 Hz Art.-Nr. 00271454.....                              | 10 |
| Overview RITMO XL 230 V, 3 Ph, 60 Hz part number 00271454 .....                           | 10 |
| Übersicht RITMO XL, 400 V, 3 Ph, 50 Hz (Buildtech) Art.-Nr. 00595459 .....                | 11 |
| Overview RITMO XL, 400 V, 3 Ph, 50 Hz (Buildtech) part number 00595459.....               | 11 |
| Kippflansch RITMO XL 400V Getriebemotor komplett Art.-Nr. 00199522 .....                  | 12 |
| Tilt flange RITMO XL 400V gear motor complete part number 00199522.....                   | 12 |
| Kippflansch RITMO XL 230V Getriebemotor 4 kW komplett Art.-Nr. 00199641 .....             | 13 |
| Tilt flange RITMO XL 230V gear motor 4 kW complete part number 00199641 .....             | 13 |
| Kippflansch RITMO XL FC-230/400V Getriebemotor komplett Art.-Nr. 00246740 .....           | 14 |
| Tilt flange RITMO XL FC-230/400V gear motor, complete part number 00246740 .....          | 14 |
| Kippflansch RITMO XL 230V, 60 Hz Getriebemotor komplett Art.-Nr. 00271455.....            | 15 |
| Tilt flange RITMO XL 230V, 60 Hz gear motor, complete part number 00271455.....           | 15 |
| Kippflansch RITMO XL 400 V mit Getriebemotor (ZF21) komplett Art.-Nr. 00595589.....       | 16 |
| Tilt flange RITMO XL 400 V with gear motor (ZF21), complete part number 00595589 .....    | 16 |
| Fahrgestell RITMO XL komplett Art.-Nr. 00199509.....                                      | 17 |
| Chassis RITMO XL, complete item no.00199509 .....   | 17 |
| Mischrohr Materialbehälter Gummi-Mischzone RITMO XL RAL9002.....                          | 18 |
| Mixing tube material hopper for rubber mixing zone RITMO XL RAL9002 .....                 | 18 |
| Behälteraufsatz - 140 Liter für RITMO XL komplett Art.-Nr. 00201870.....                  | 19 |
| Extension hopper - 140 litres for RITMO XL, complete part number 00201870 .....           | 19 |
| RITMO XL Mischwendel .....  | 20 |
| RITMO XL Mixing shaft.....  | 20 |

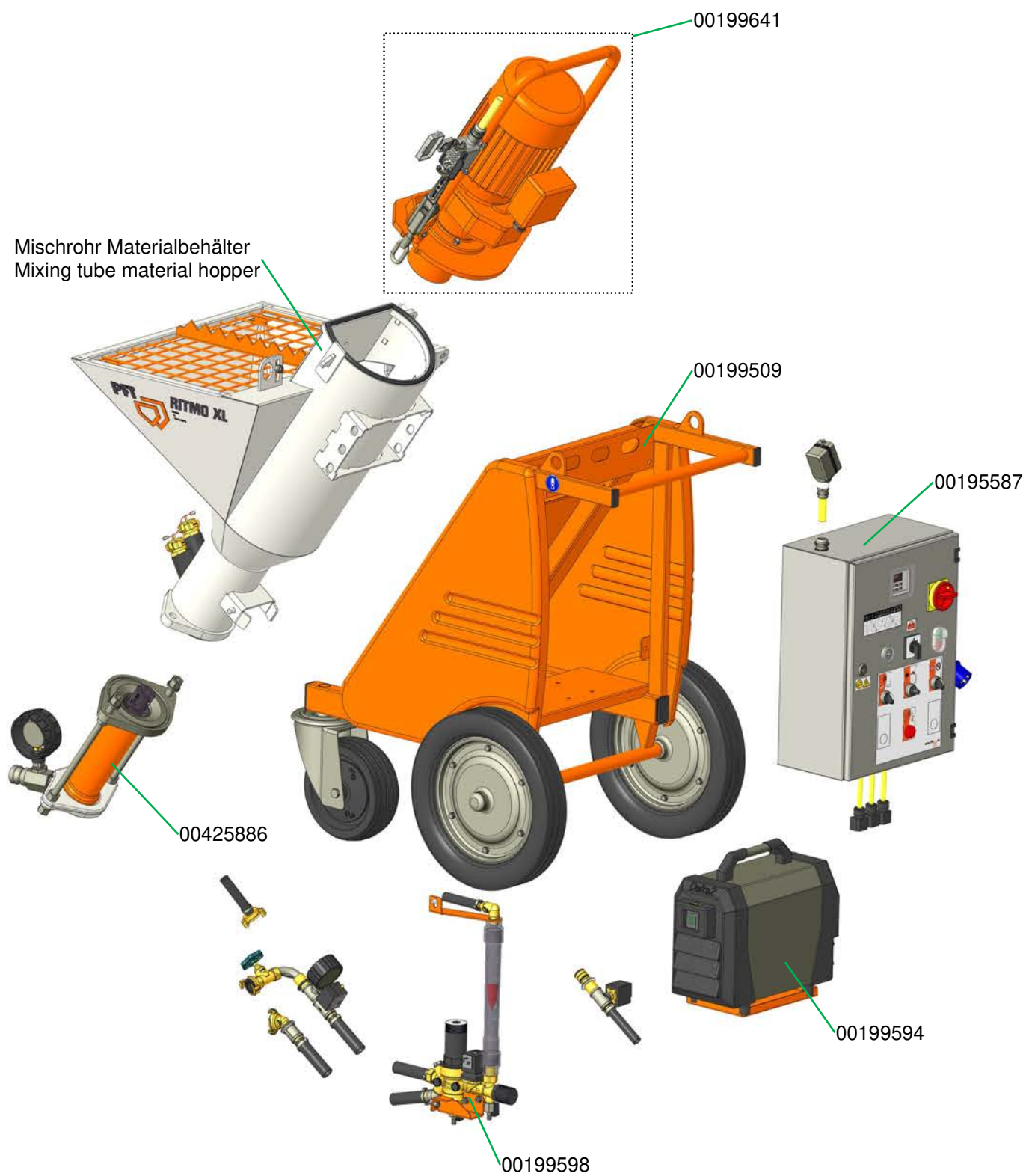
|  |    |
|--|----|
| Pumpeneinheit SD 6-3 slimline 25V-Teil komplett für RITMO XL Art.-Nr. 00425886.....                        | 21 |
| Pump unit SD 6-3 slimline, complete 25 male part for RITMO XL part number 00425886 .....                   | 21 |
| Pumpeneinheit D 7-2.5 für RITMO XL Art.-Nr. 00271467 .....   | 22 |
| Pump unit D 7-2.5 for RITMO XL part number 00271467 .....  | 22 |
| Rotor Stator D8-2 für RITMO XL FC-230/400V geothermie .....  | 23 |
| Pump unit D8-2 for RITMO XL FC-230/400V geothermal .....   | 23 |
| Luftarmatur RITMO XL komplett Art.-Nr. 00199594 .....  | 24 |
| Air manifold RITMO XL, complete part number 00199594 .....   | 24 |
| Luftarmatur RITMO XL, 230 V, 60 Hz komplett Art.-Nr. 00271458.....   | 25 |
| Air manifold RITMO XL, 230 V, 60 Hz, complete part number 00271458 .....                                   | 25 |
| Luftkompressor COMP M-250, 230 V, 3 Ph, 50/60 Hz Art.-Nr. 00533839.....                                    | 26 |
| Air compressor COMP M-250, 230 V, 3 Ph, 50/60 Hz part number 00533839.....                                 | 26 |
| Luftkompressor COMP M-250, 400 V, 3 Ph, 50 Hz mit Drucksteuerung für G 4 (ab 2013) Art.-Nr. 00414866 ..... | 27 |
| Air compressor COMP M-250, 400 V, 3 Ph, 50 Hz with pressure G 4 (from 2013) part number 00414866.....      | 27 |
| Luftkompressor COMP M-250 Ersatzteile.....   | 28 |
| Air compressor COMP M-250 spare parts .....  | 28 |
| Wasserarmatur RITMO XL, 42 V Art.-Nr. 00199598 .....   | 29 |
| Water manifold RITMO XL, 42 V part number 00199598.....  | 29 |
| Wasserarmatur RITMO XL, 230 V, 3 Ph, 60 Hz Art.-Nr. 00271462.....  | 30 |
| Water manifold RITMO XL, 230 V, 3 Ph, 60 Hz part number 00271462 .....                                     | 30 |
| Wasserarmatur RITMO XL Art.-Nr. 00199507 .....   | 31 |
| Water manifold RITMO XL part number 00199507 .....   | 31 |
| Übersicht Wasserarmatur RITMO XL Art.-Nr. 00199507 .....   | 32 |
| Overview Water manifold RITMO XL part number 00199507 .....  | 32 |
| Armaturenblock DK06FN-1/2"E 42V, Art.-Nr. 00039286.....  | 33 |
| Manifold block DK06FN-1/2"E 42V, part number 00039286 .....  | 33 |
| Schaltschrank RITMO XL, 230/400 V Art.-Nr. 00197827 .....  | 34 |
| Control box RITMO XL, 230/400 V part number 00197827 .....   | 34 |
| Schaltschrank RITMO XL, 230/400 V Art.-Nr. 00197827 .....  | 35 |
| Control box RITMO XL, 230/400 V part number 00197827 .....   | 35 |
| Schaltschrank RITMO XL, 230 V, 3 Ph, 60 Hz Art.-Nr. 00271520.....  | 36 |

|   |    |
|---|----|
| Control box RITMO XL, 230 V, 3 Ph, 60 Hz part number 00271520 ..... | 36 |
| Schaltschrank RITMO XL, 230 V, 3 Ph, 60 Hz Art.-Nr. 00271520.....   | 37 |
| Control box RITMO XL, 230 V, 3 Ph, 60 Hz part number 00271520 ..... | 37 |
| Schaltschrank Ritmo XL 400V Art.-Nr. 00186412 .....                 | 38 |
| Control box Ritmo XL 400V part number 00186412.....                 | 38 |
| Schaltschrank Ritmo XL 400V Art.-Nr. 00186412 .....                 | 39 |
| Control box Ritmo XL 400V part number 00186412.....                 | 39 |
| Schaltschrank RITMO XL FC-230V Art.-Nr. 00195587 .....              | 40 |
| Control box RITMO XL FC-230V part number 00195587.....              | 40 |
| Schaltschrank RITMO XL FC-230V Art.-Nr. 00195587 .....              | 41 |
| Control box RITMO XL FC-230V part number 00195587.....              | 41 |
| Zubehör .....   | 42 |
| Accessories .....   | 42 |

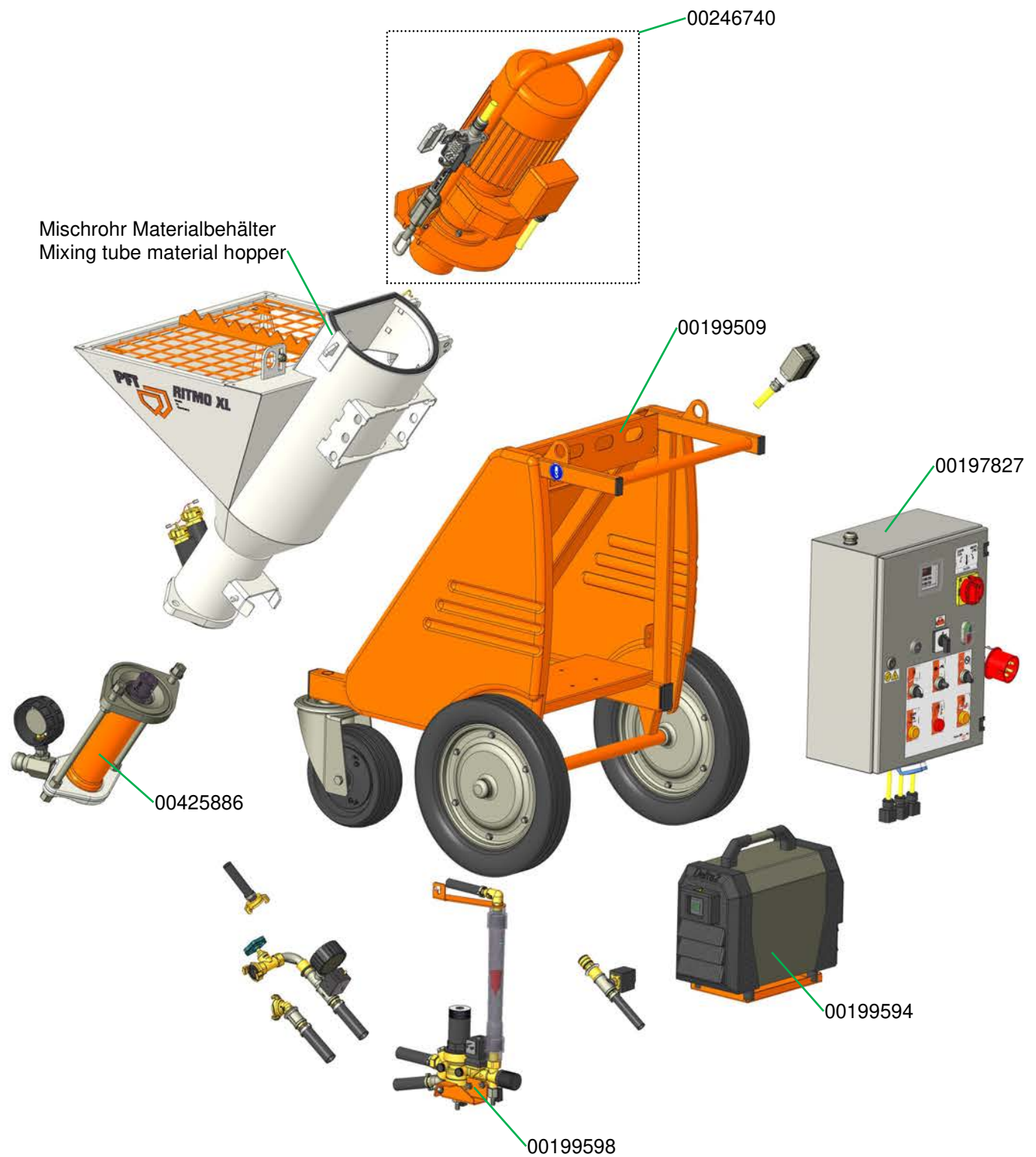
Übersicht RITMO XL FC 400V, 3 Ph, 50 Hz Art.-Nr. 00186478  
Overview RITMO XL FC 400V, 3 Ph, 50 Hz part number 00186478



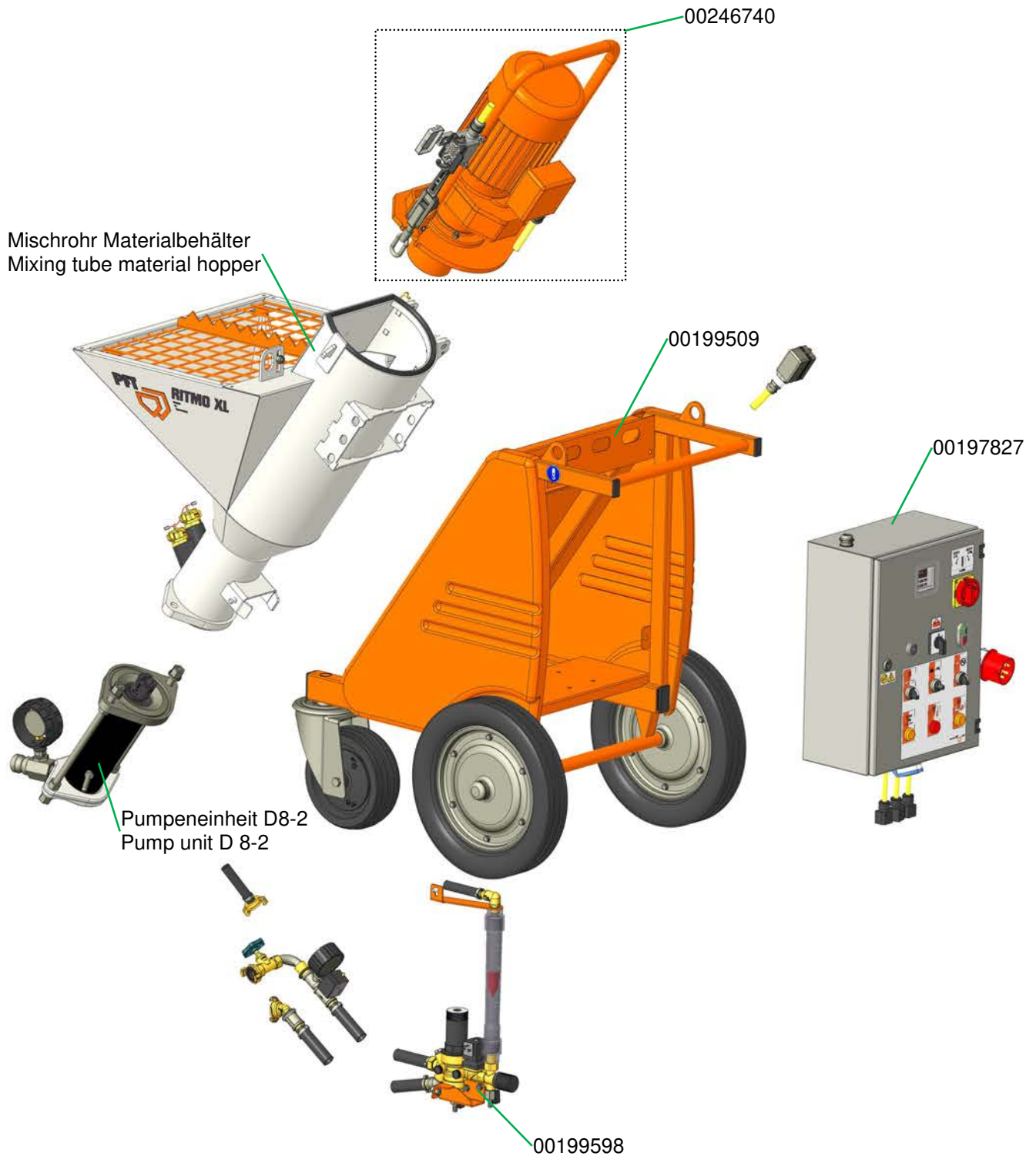
Übersicht RITMO XL FC-230V, 1 Ph, 50 Hz Art.-Nr. 00197819  
Overview RITMO XL FC-230V, 1 Ph, 50 Hz part number 00197819



Übersicht RITMO XL FC 230/400V 1/3 Ph, 50 Hz Art.-Nr. 00197821  
Overview RITMO XL FC 230/400V 1/3 Ph, 50 Hz part number 00197821



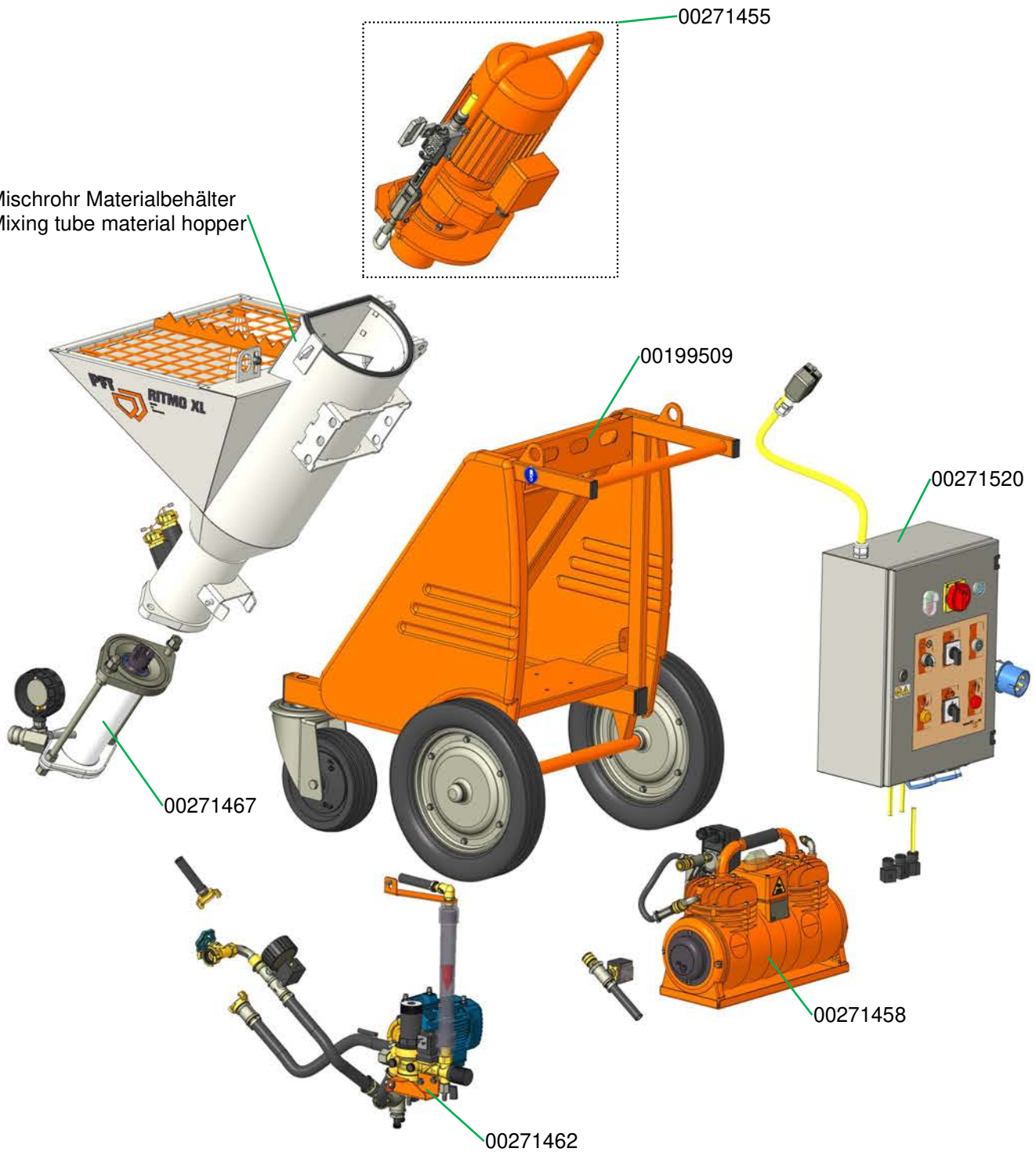
Übersicht RITMO XL FC-230/400V, 1/3 Ph, 50 Hz geothermie Art.-Nr. 00231496  
Overview RITMO XL FC-230/400V, 1/3 Ph, 50 Hz geothermal energy part number 00231496



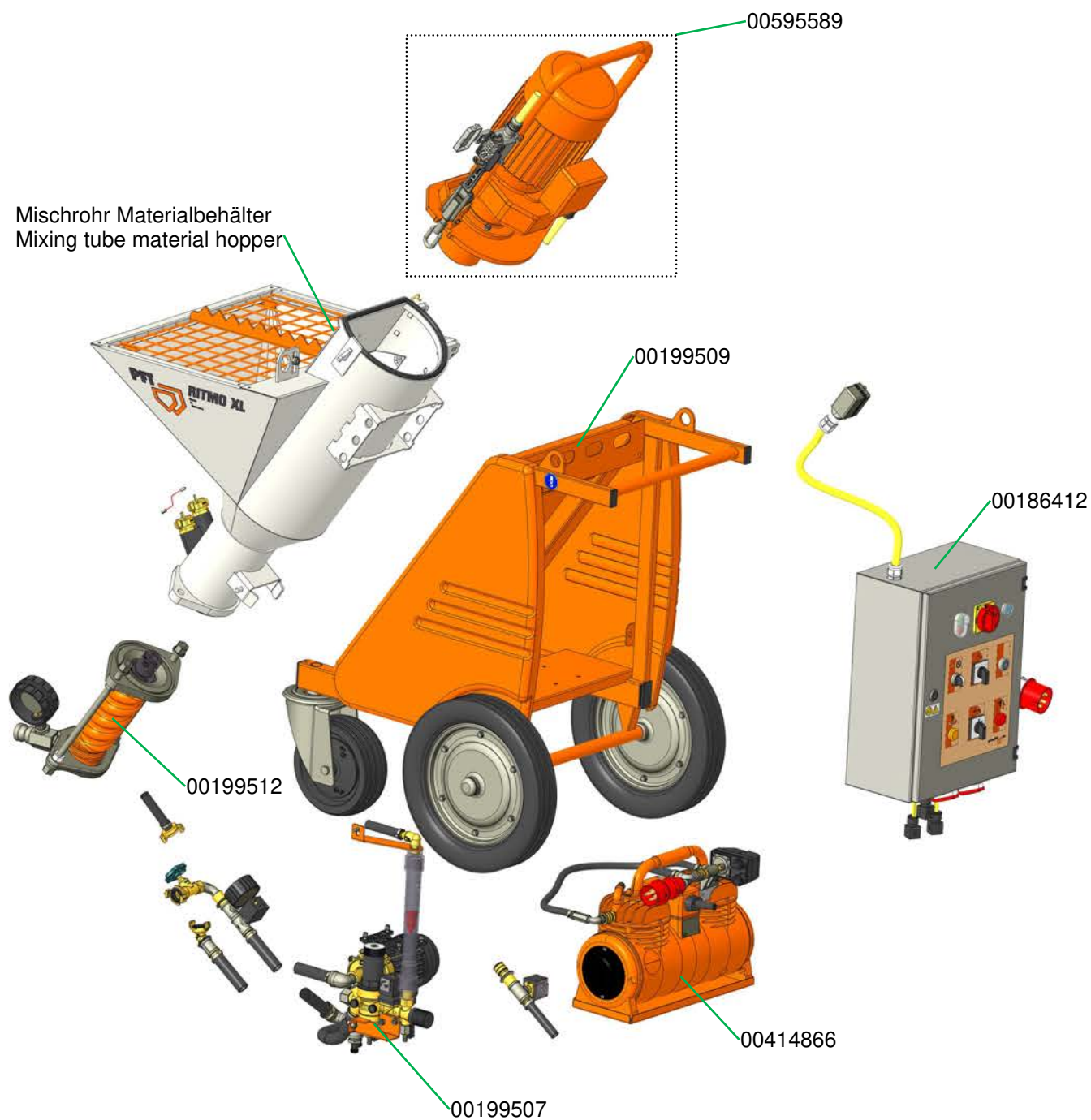
Übersicht RITMO XL 230 V, 3 Ph, 60 Hz Art.-Nr. 00271454  
Overview RITMO XL 230 V, 3 Ph, 60 Hz part number 00271454

00271455

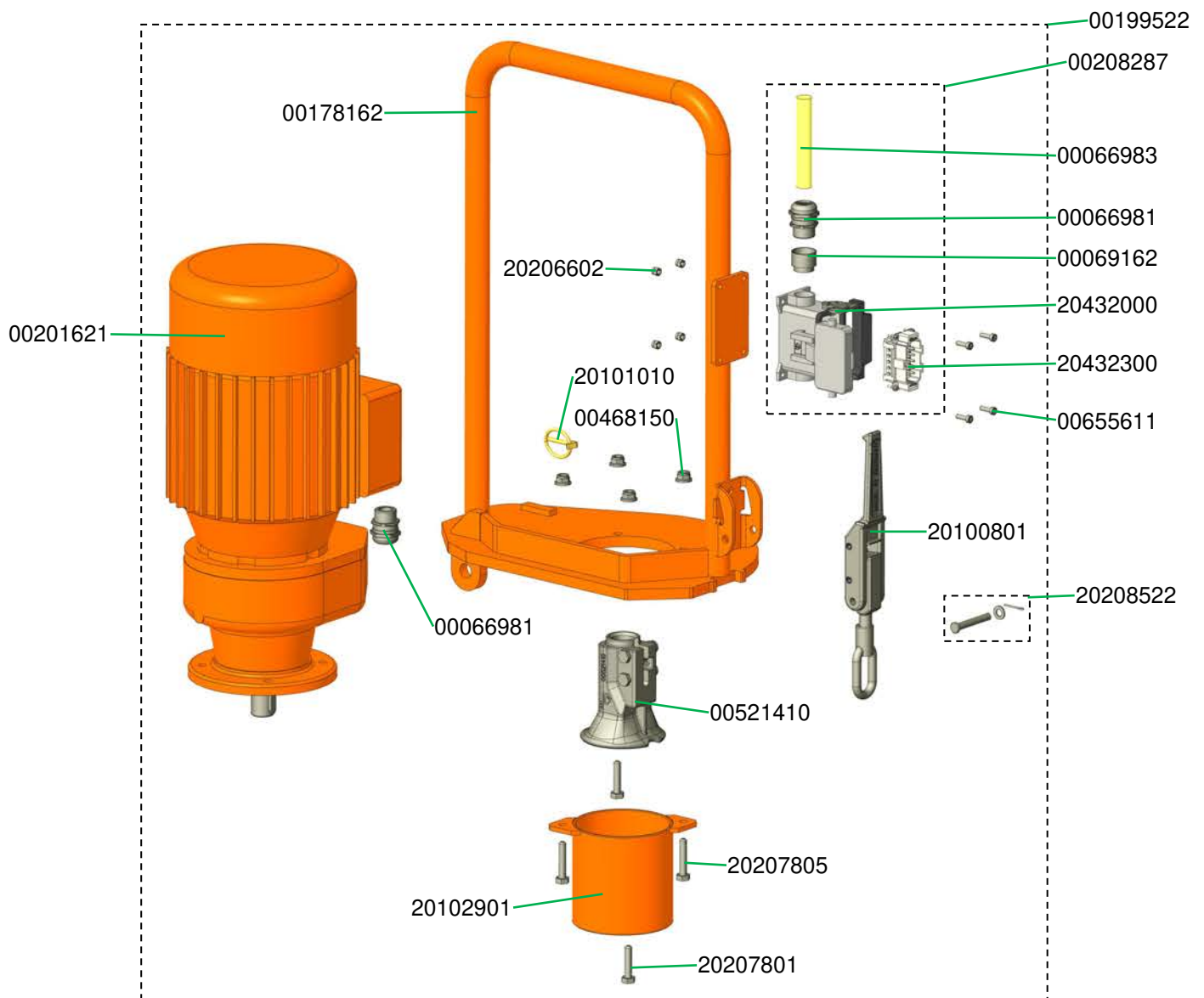
Mischrohr Materialbehälter  
Mixing tube material hopper



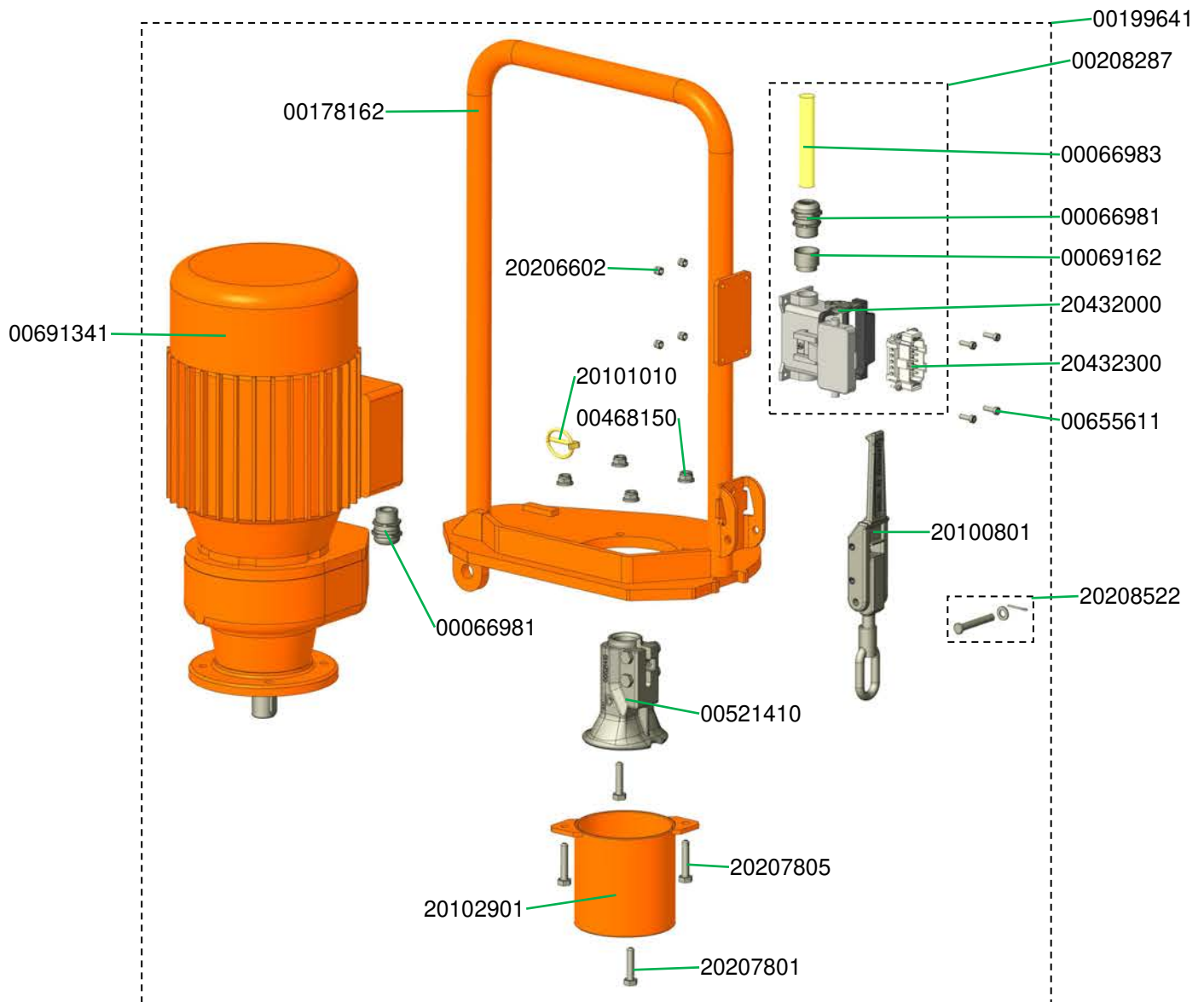
Übersicht RITMO XL, 400 V, 3 Ph, 50 Hz (Buildtech) Art.-Nr. 00595459  
Overview RITMO XL, 400 V, 3 Ph, 50 Hz (Buildtech) part number 00595459



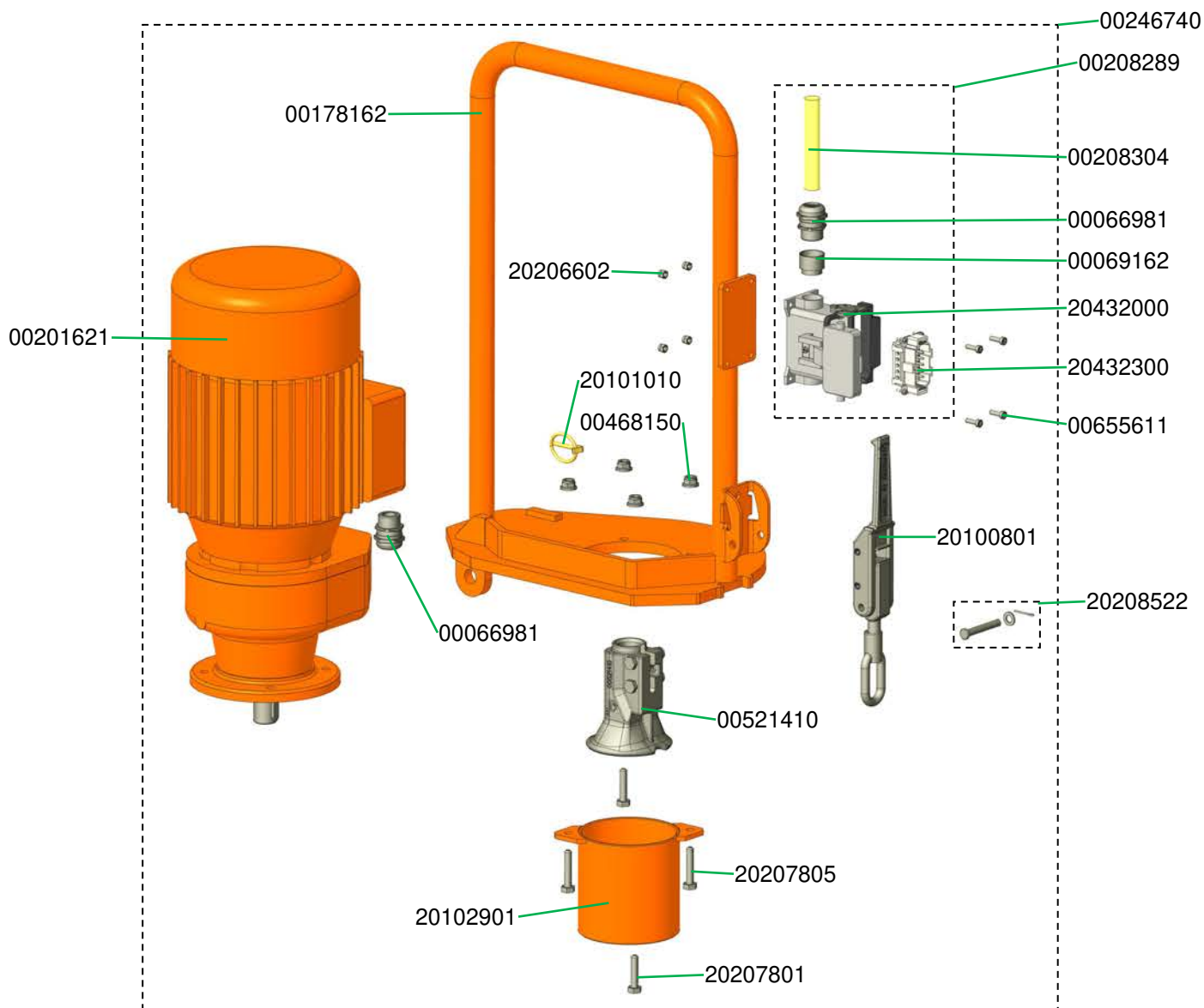
Kippflansch RITMO XL 400V Getriebemotor komplett Art.-Nr. 00199522  
Tilt flange RITMO XL 400V gear motor complete part number 00199522



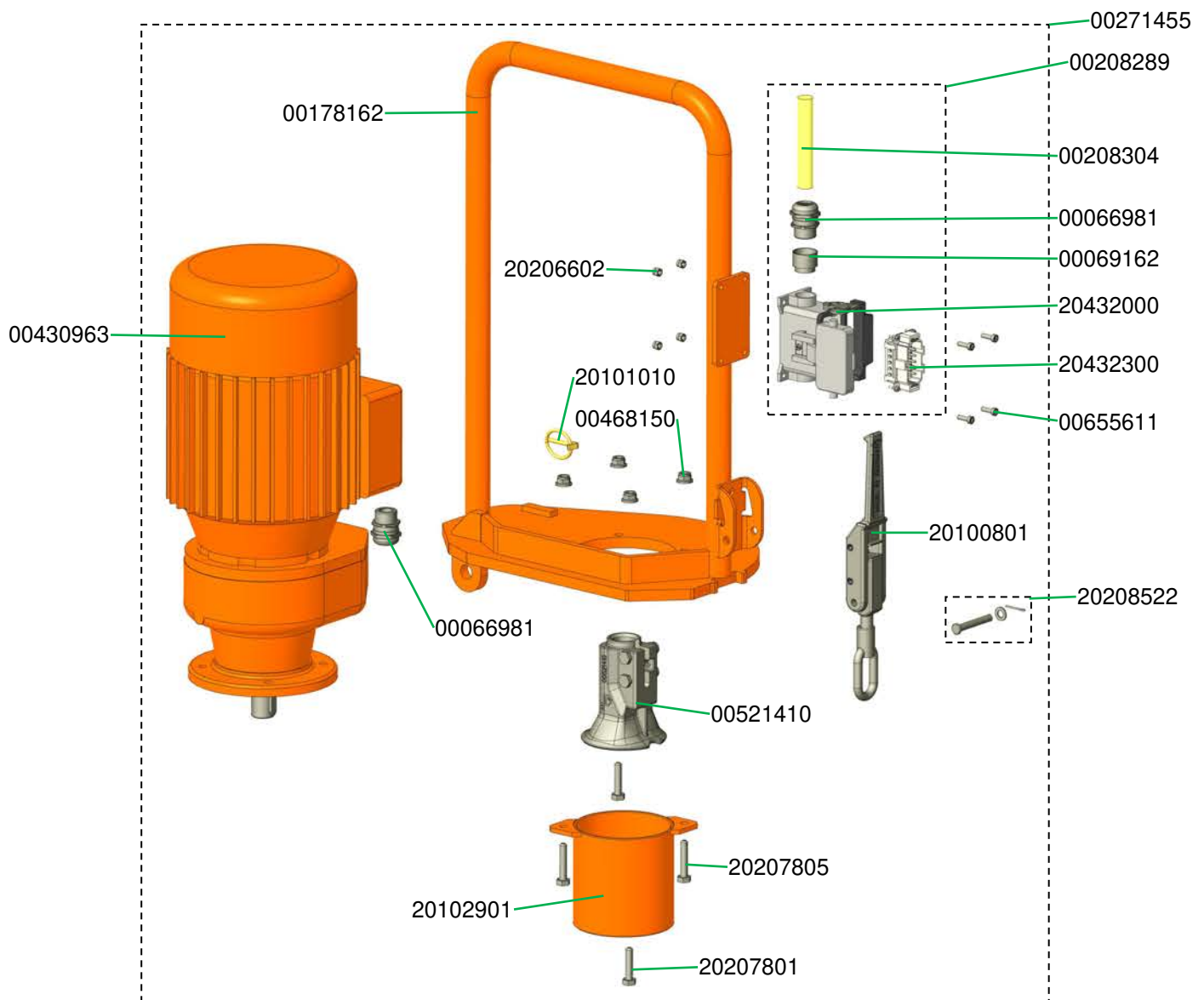
Kippflansch RITMO XL 230V Getriebemotor 4 kW komplett Art.-Nr. 00199641  
Tilt flange RITMO XL 230V gear motor 4 kW complete part number 00199641



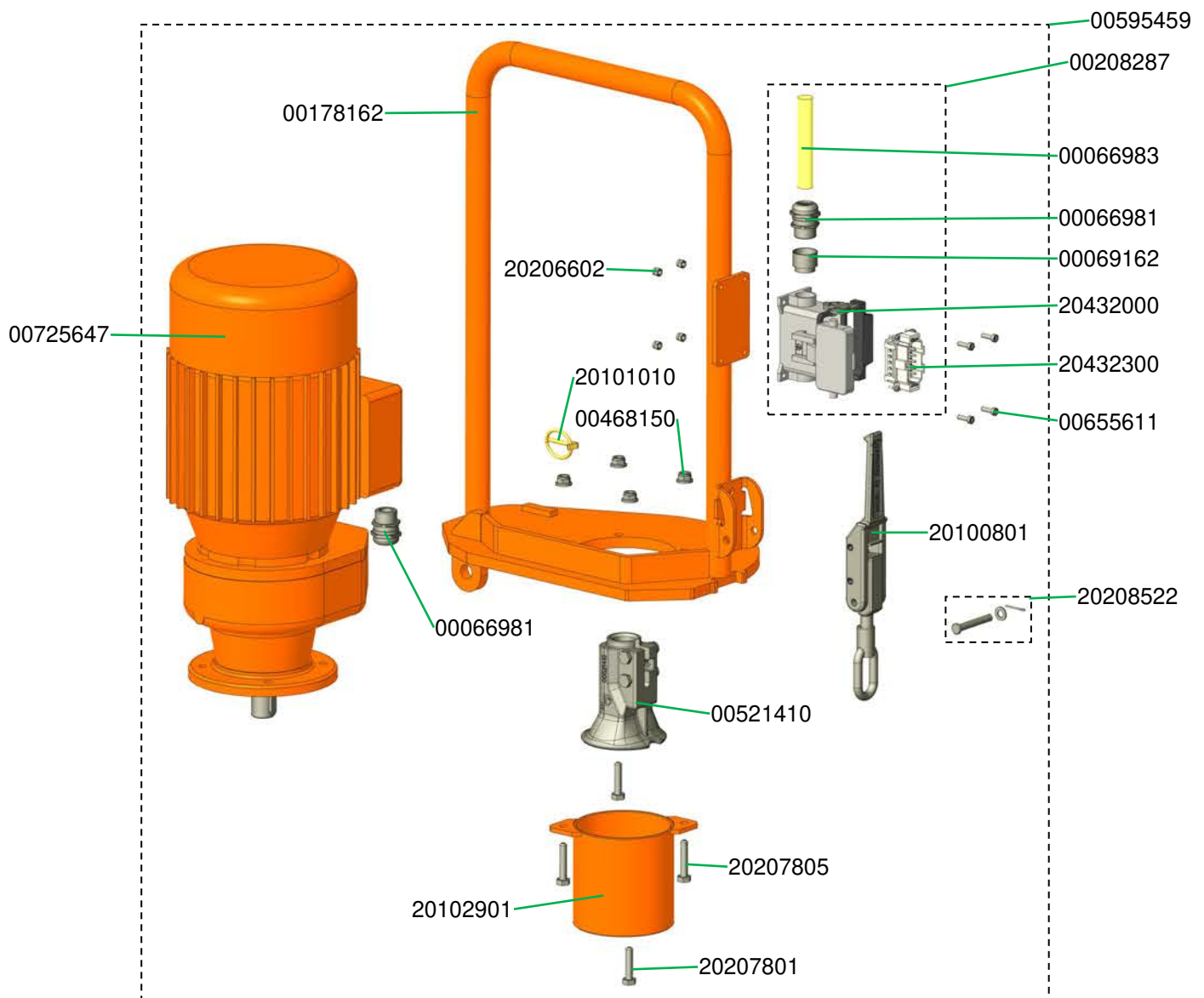
Kippflansch RITMO XL FC-230/400V Getriebemotor komplett Art.-Nr. 00246740  
Tilt flange RITMO XL FC-230/400V gear motor, complete part number 00246740



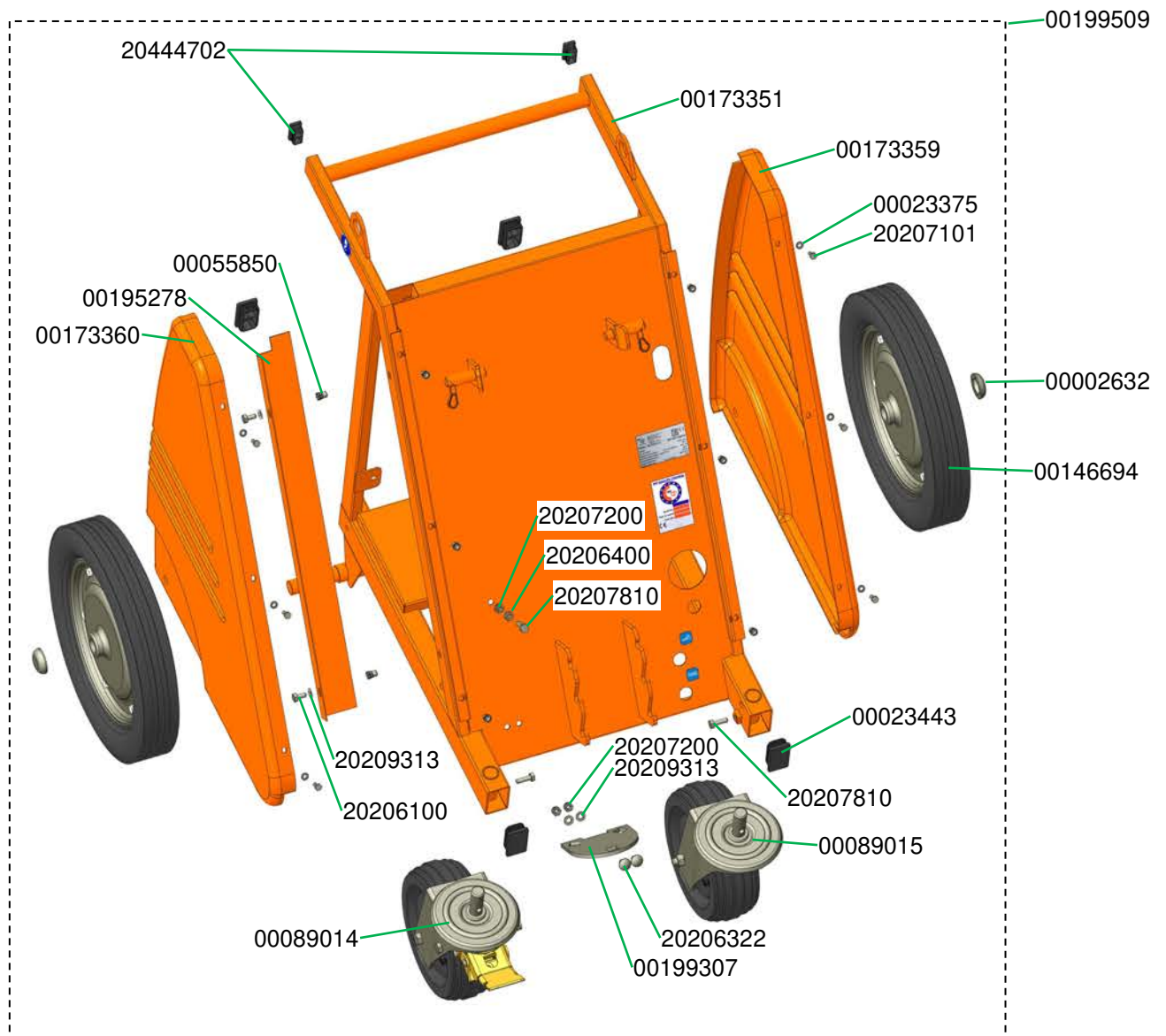
Kippflansch RITMO XL 230V, 60 Hz Getriebemotor komplett Art.-Nr. 00271455  
Tilt flange RITMO XL 230V, 60 Hz gear motor, complete part number 00271455



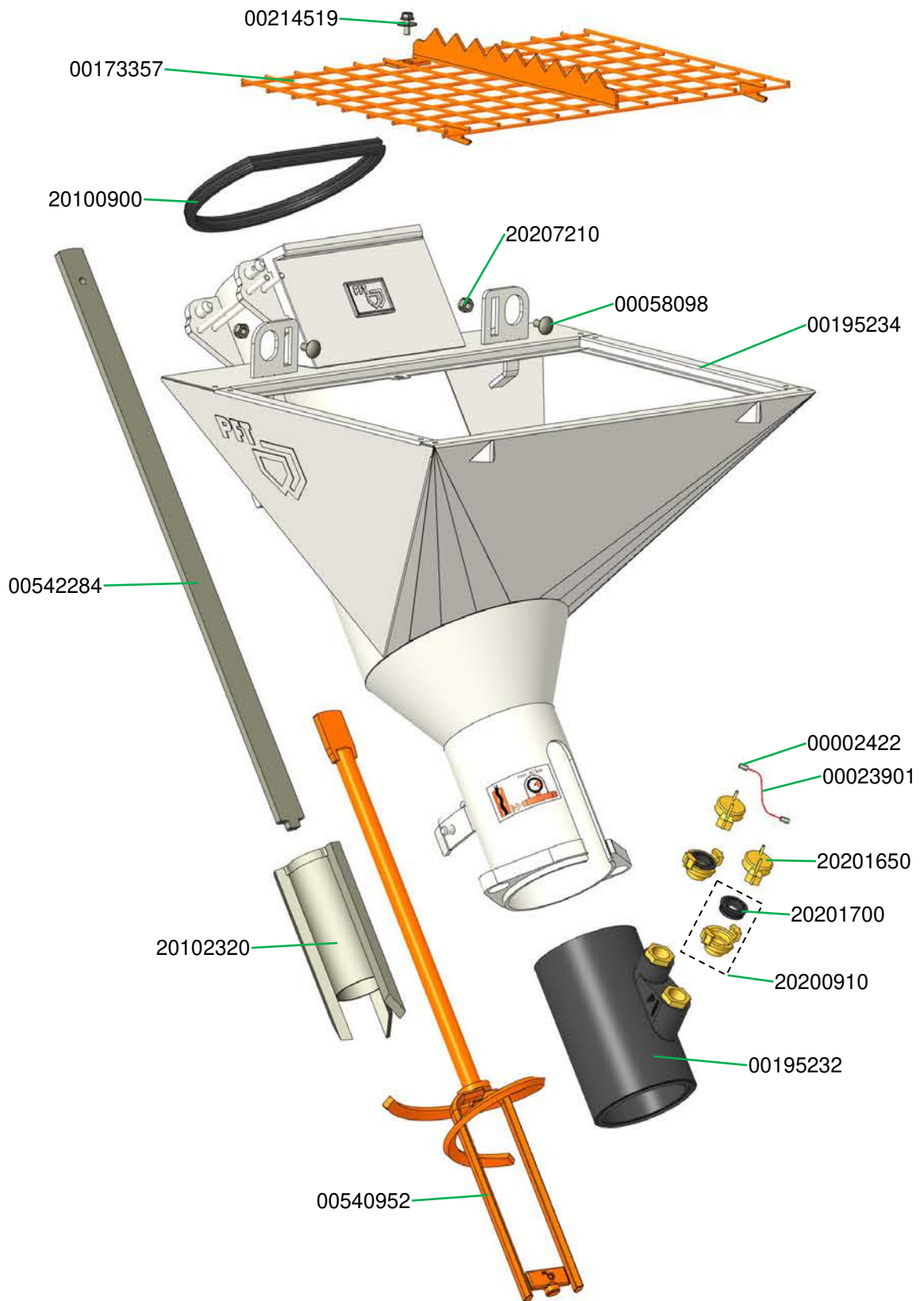
Kippflansch RITMO XL 400 V mit Getriebemotor (ZF21) komplett Art.-Nr. 00595589  
 Tilt flange RITMO XL 400 V with gear motor (ZF21), complete part number 00595589



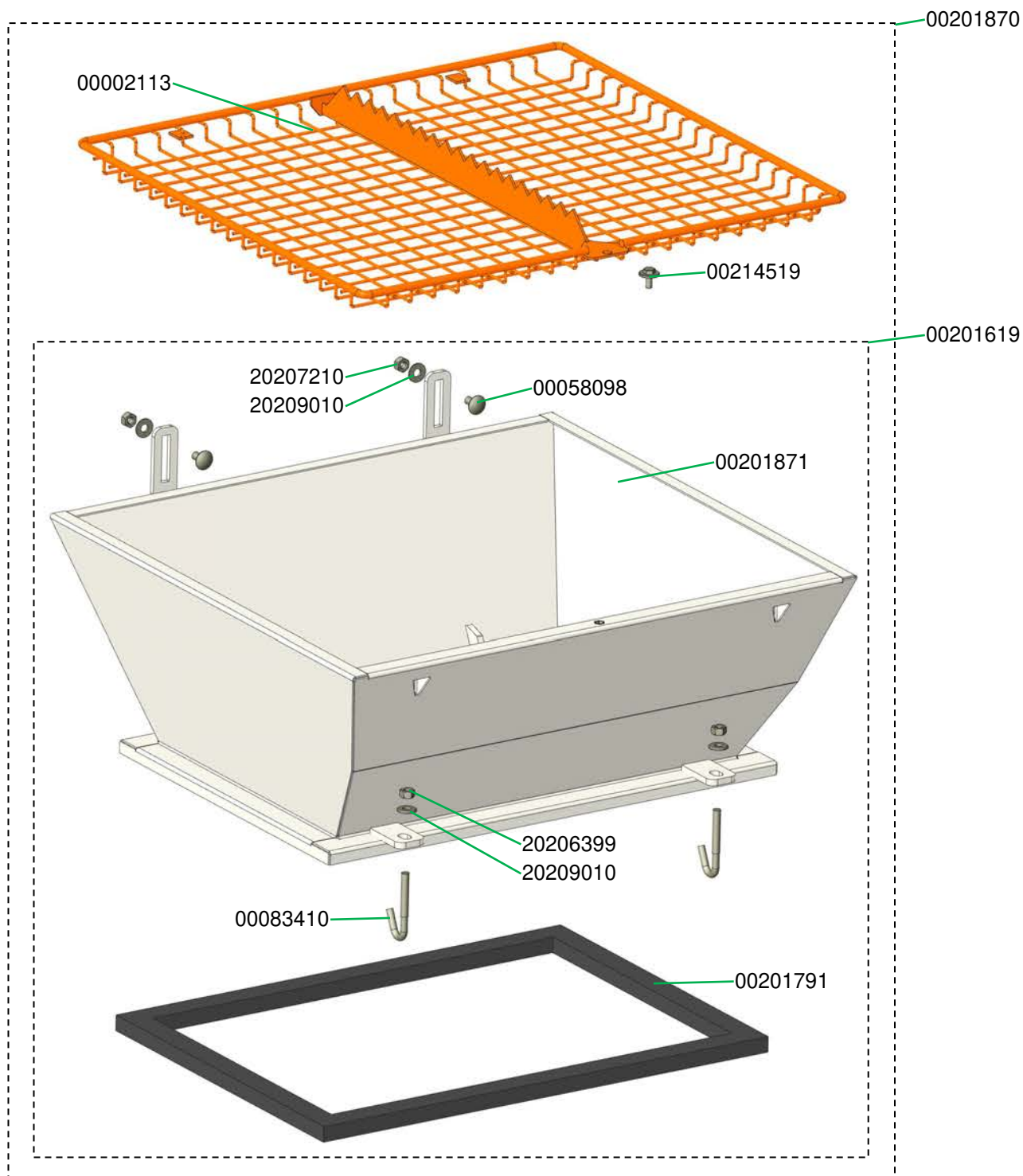
Fahrgestell RITMO XL komplett Art.-Nr. 00199509  
Chassis RITMO XL, complete item no.00199509



Mischrohr Materialbehälter Gummi-Mischzone RITMO XL RAL9002  
Mixing tube material hopper for rubber mixing zone RITMO XL RAL9002



Behälteraufsatz - 140 Liter für RITMO XL komplett Art.-Nr. 00201870  
Extension hopper - 140 litres for RITMO XL, complete part number 00201870



## RITMO XL Mischwendel RITMO XL Mixing shaft

Art.-Nr. / part number 00540952

Mischwendel BIONIK RITMO XL Maschinenputz,  
rechtsdrehend

Mixing shaft BIONIK RITMO XL machine plaster,  
clockwise rotation

Mischintensität / blending intensity: A

Druckintensität / pressure intensity: 96



Art.-Nr. / part number 00542074

Mischwendel BIONIK RITMO XL Fließestrich,  
rechtsdrehend

Mixing shaft BIONIK RITMO XL floor screed, clockwise  
rotation

Mischintensität / blending intensity: A

Druckintensität / pressure intensity: 250



Art.-Nr. / part number 00547470

Mischwendel BIONIK RITMO XL Leichtputz,  
rechtsdrehend

Mixing shaft BIONIK RITMO XL light plaster, clockwise  
rotation

Mischintensität / blending intensity: A

Druckintensität / pressure intensity: 172



Art.-Nr. / part number 00549321

Mischwendel BIONIK RITMO XL Dämmputz plus,  
rechtsdrehend

Mixing shaft BIONIK RITMO XL insulating plaster plus,  
clockwise rotation

Mischintensität / blending intensity: A

Druckintensität / pressure intensity: 182



Art.-Nr. / part number 00549772

Mischwendel BIONIK RITMO XL Dämmputz,  
rechtsdrehend

Mixing shaft BIONIK RITMO XL insulating plaster,  
clockwise rotation

Mischintensität / blending intensity: A

Druckintensität / pressure intensity: 296



Art.-Nr. / part number 00596905

Mischwendel BIONIK RITMO XL Maschinenputz HD,  
rechtsdrehend

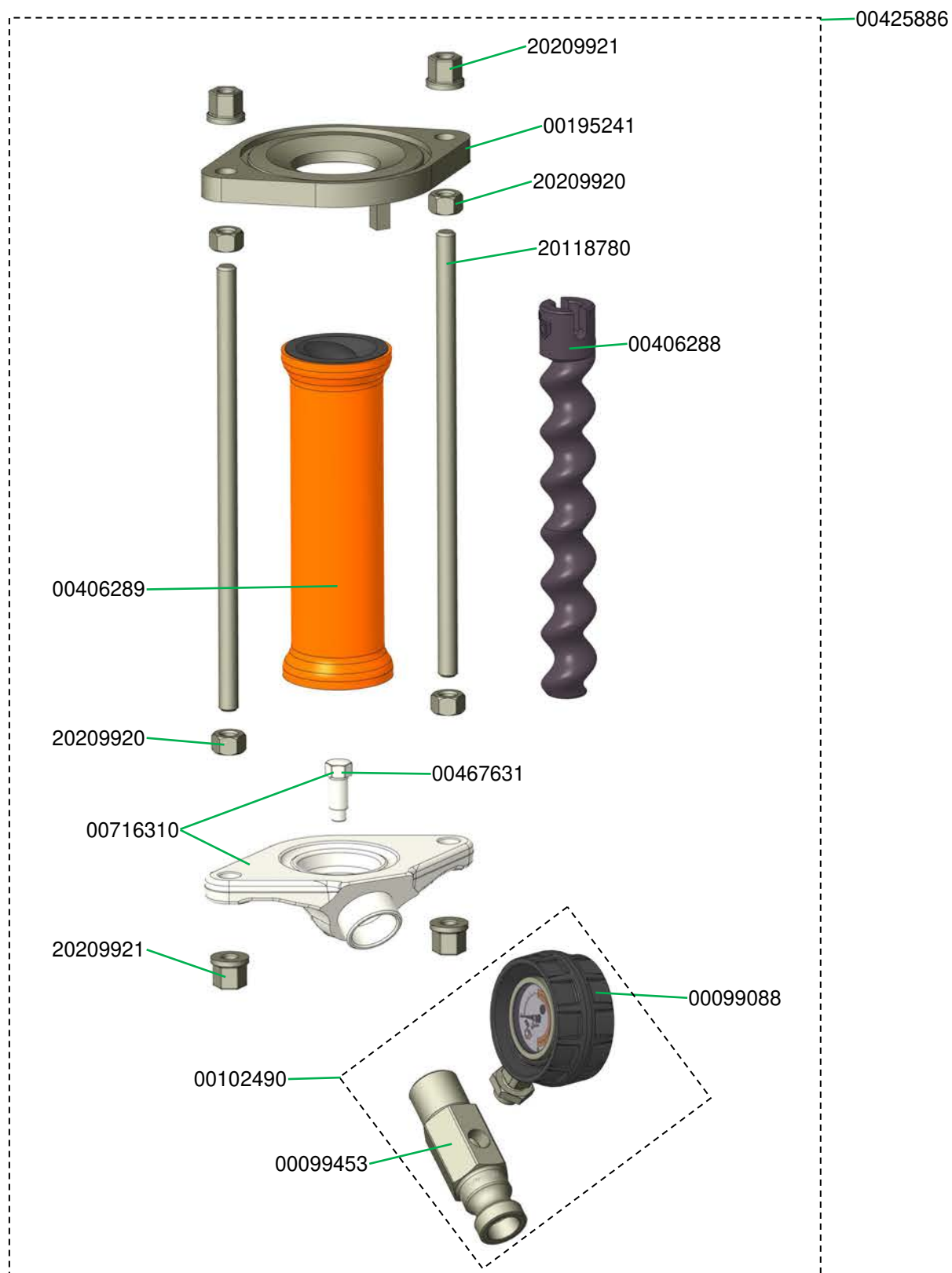
Mixing shaft BIONIK RITMO XL machine plaster HD,  
clockwise rotation

Mischintensität / blending intensity: A

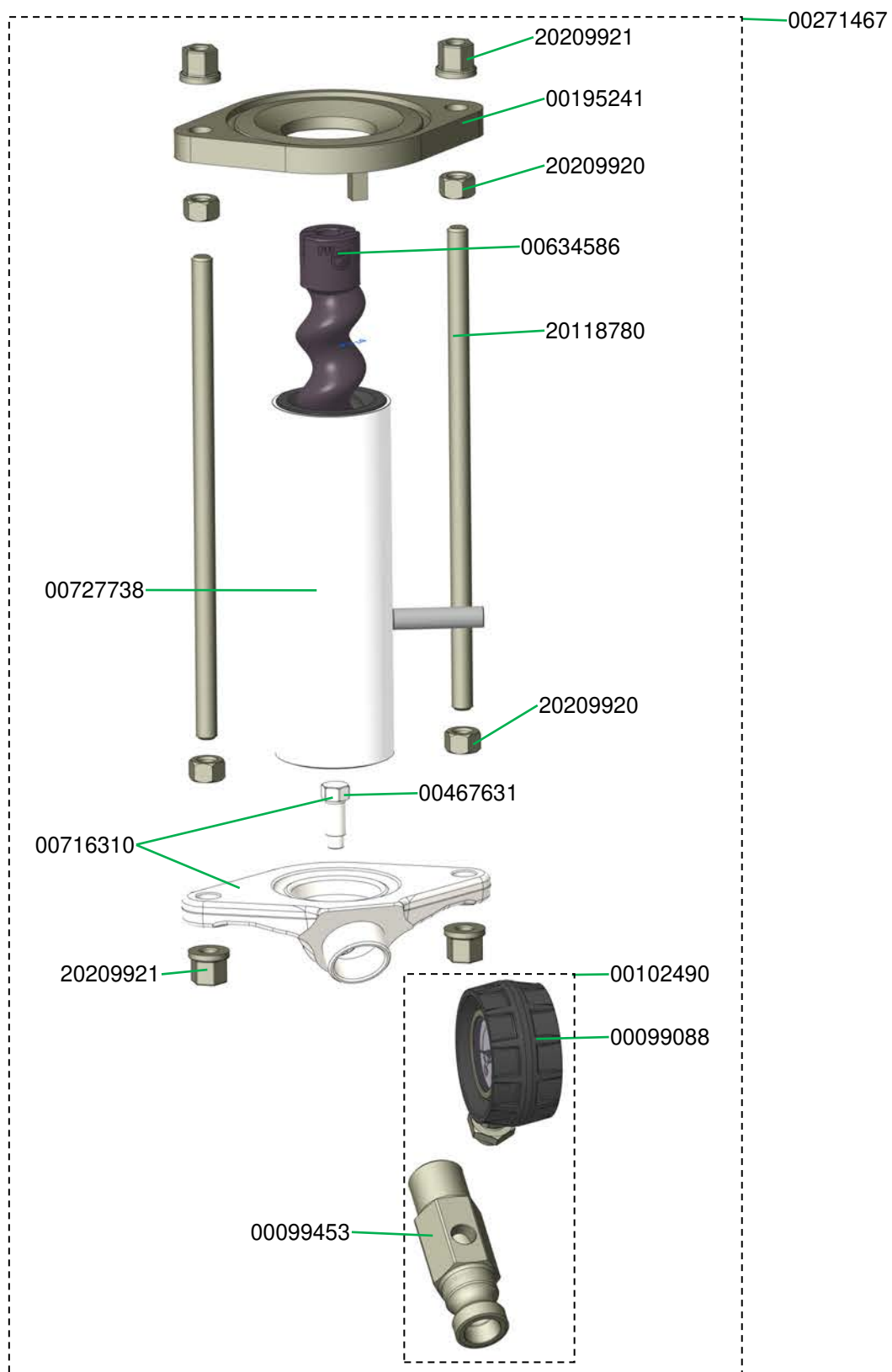
Druckintensität / pressure intensity: 96

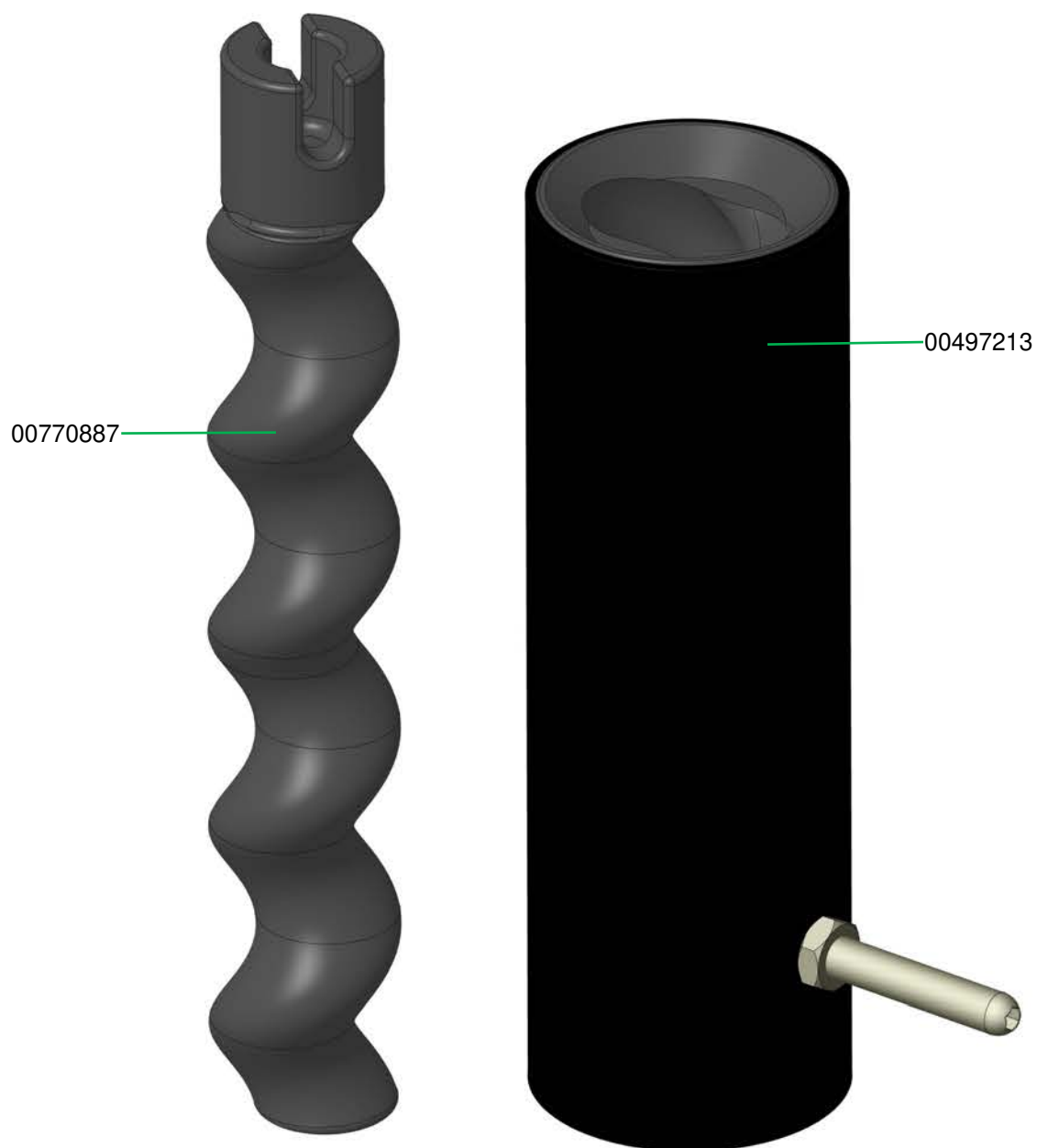


Pumpeneinheit SD 6-3 slimline 25V-Teil komplett für RITMO XL Art.-Nr. 00425886  
 Pump unit SD 6-3 slimline, complete 25 male part for RITMO XL part number 00425886

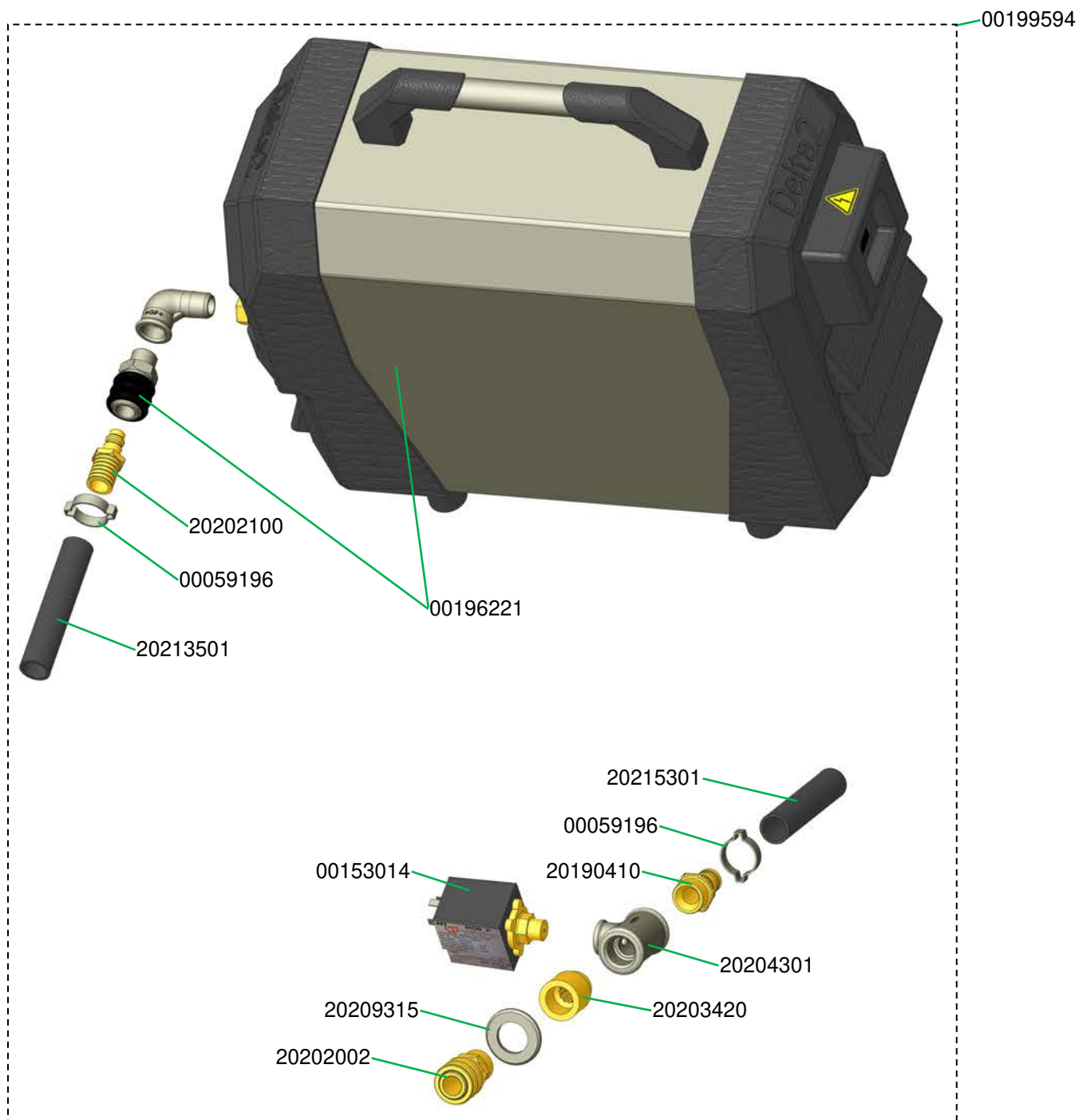


Pumpeneinheit D 7-2.5 für RITMO XL Art.-Nr. 00271467  
 Pump unit D 7-2.5 for RITMO XL part number 00271467

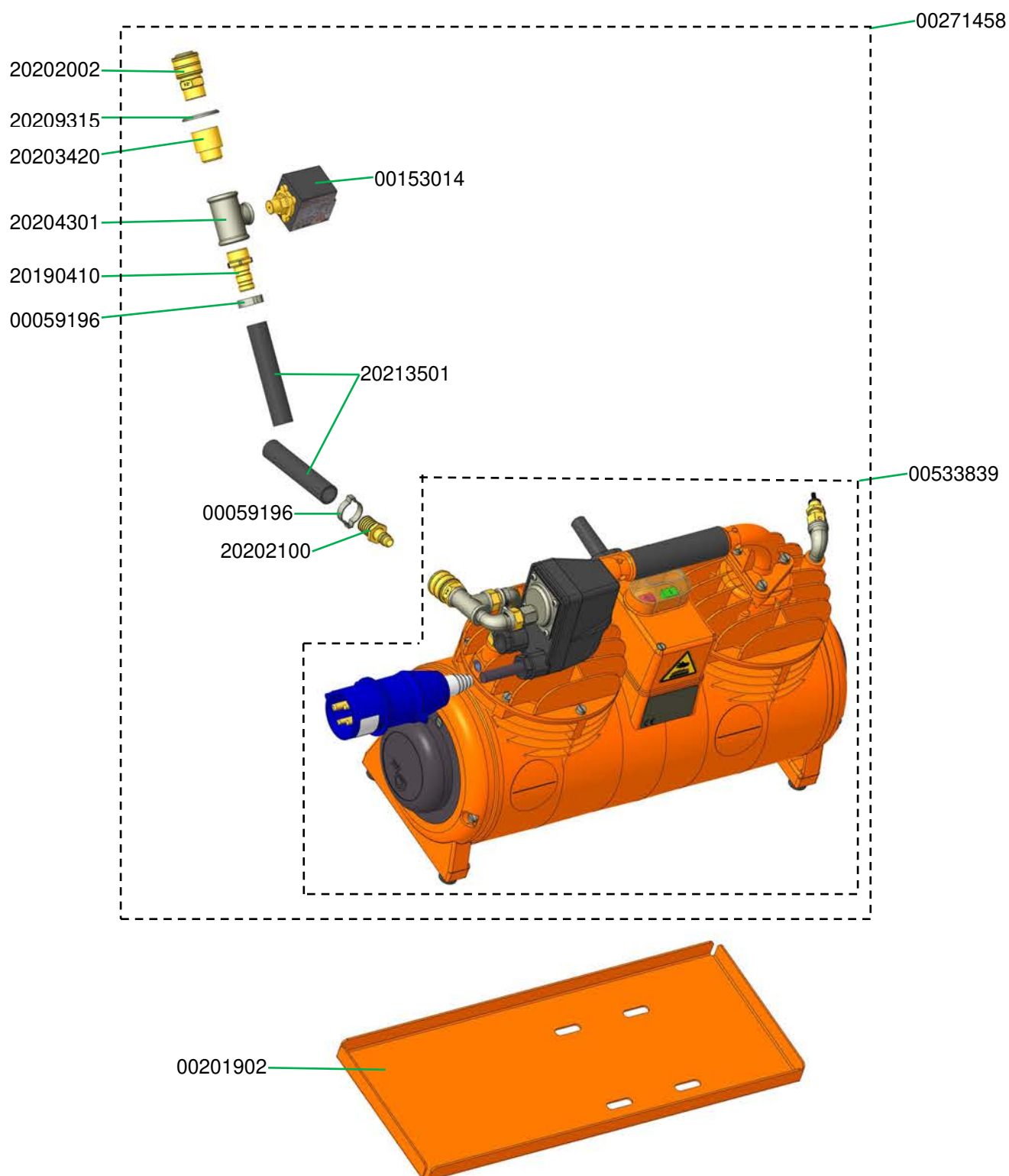


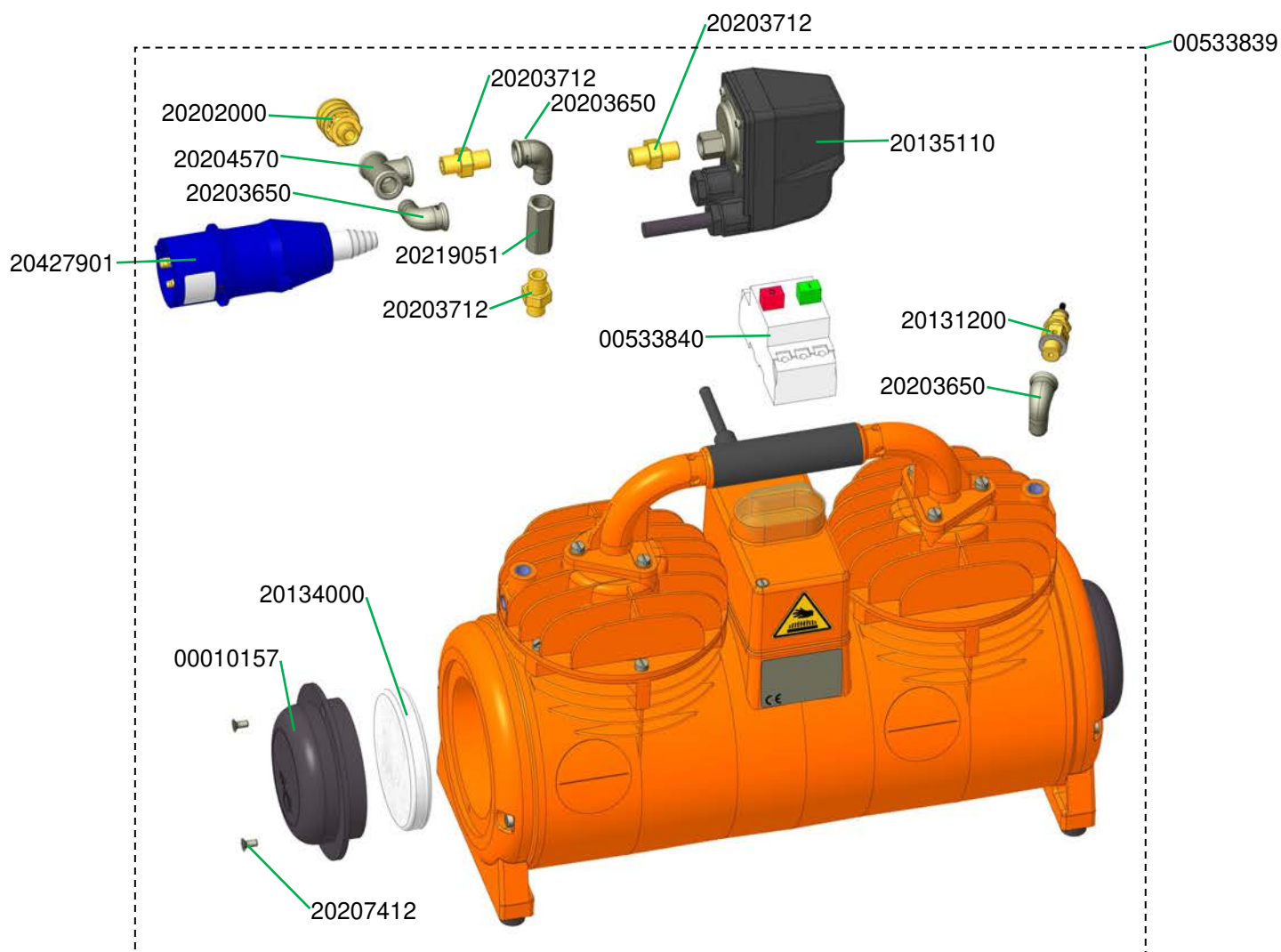


Luftarmatur RITMO XL komplett Art.-Nr. 00199594  
Air manifold RITMO XL, complete part number 00199594

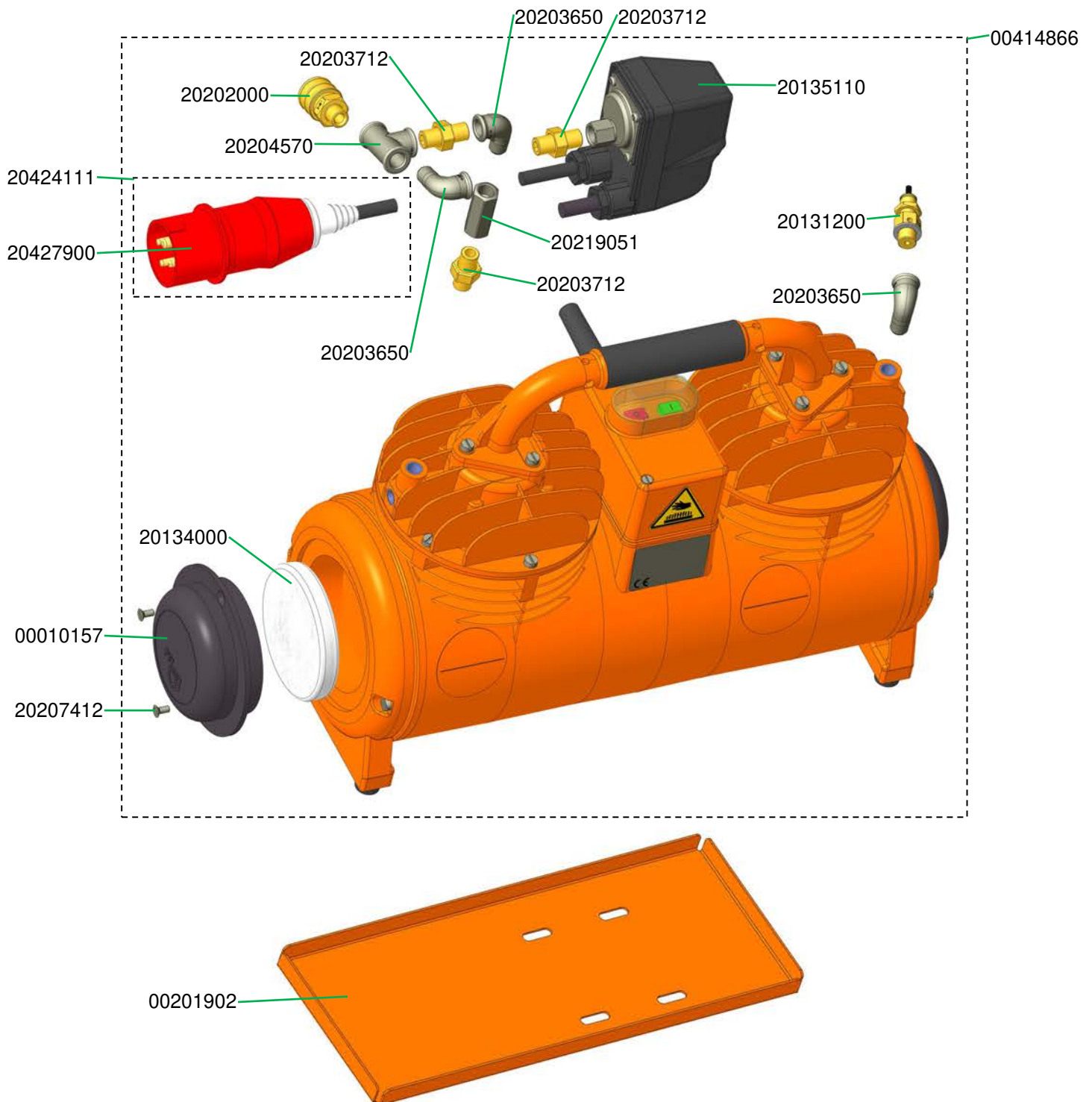


Luftarmatur RITMO XL, 230 V, 60 Hz komplett Art.-Nr. 00271458  
Air manifold RITMO XL, 230 V, 60 Hz, complete part number 00271458

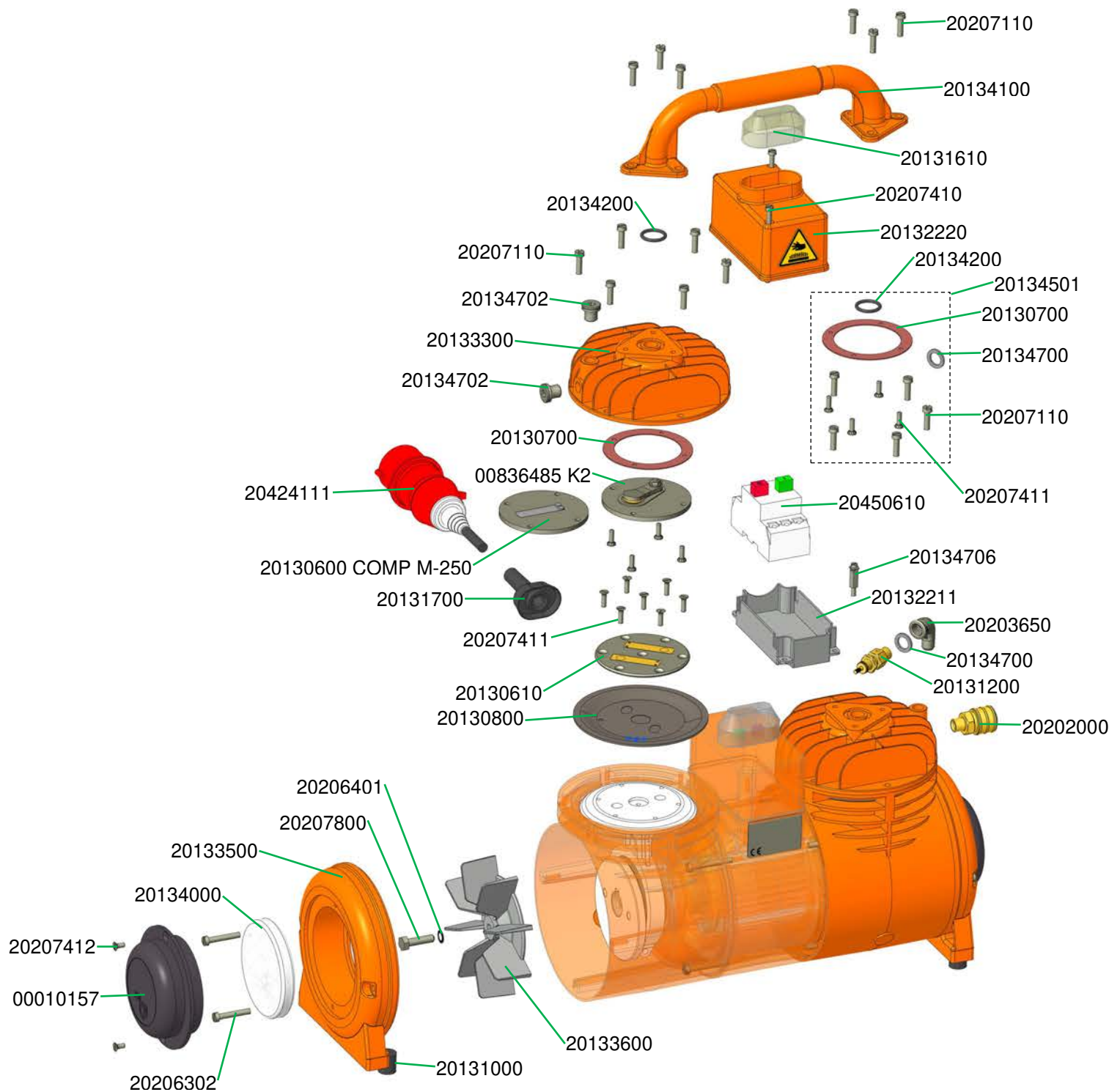




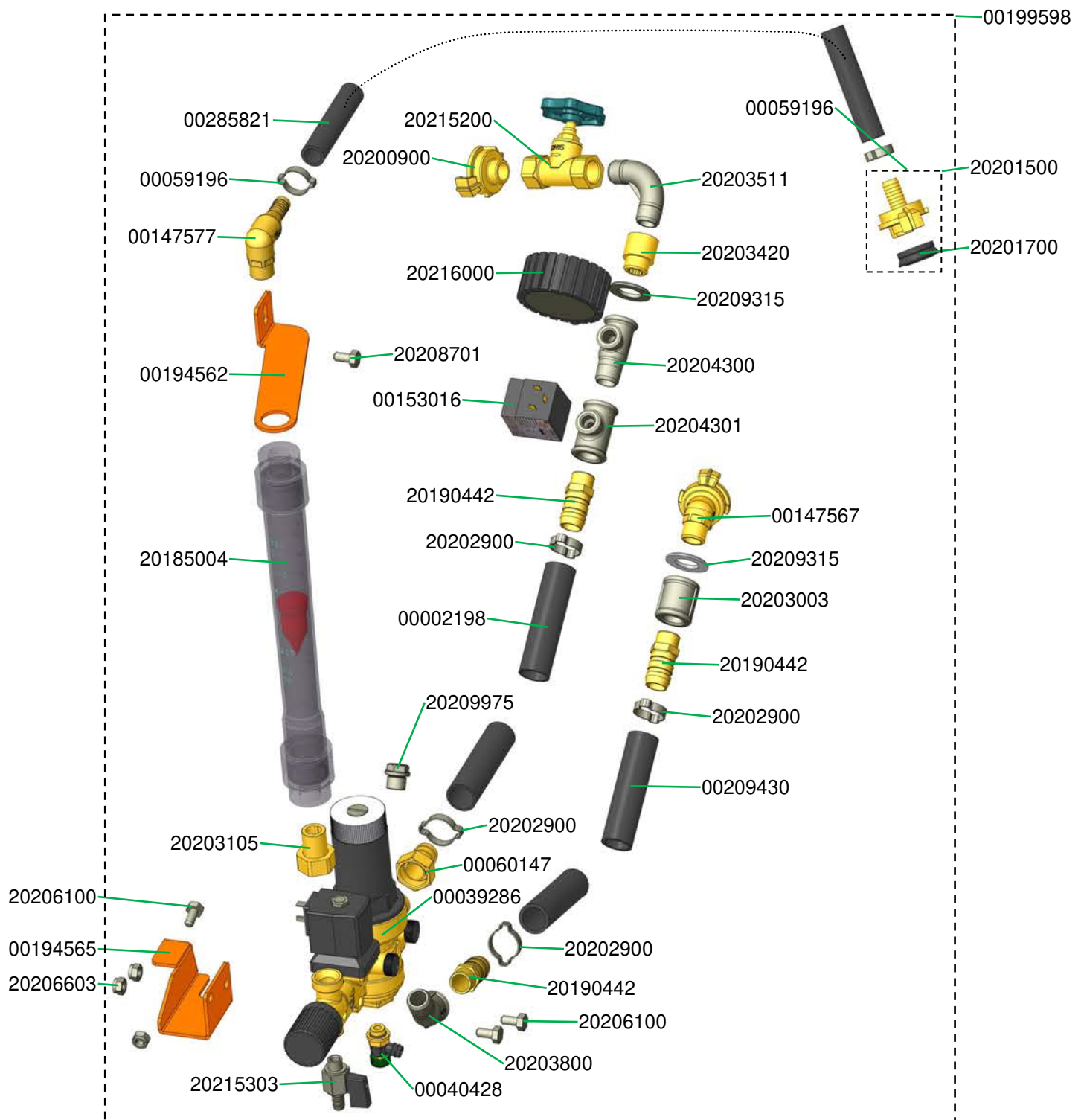
Air compressor COMP M-250, 400 V, 3 Ph, 50 Hz with pressure G 4 (from 2013) part number 00414866



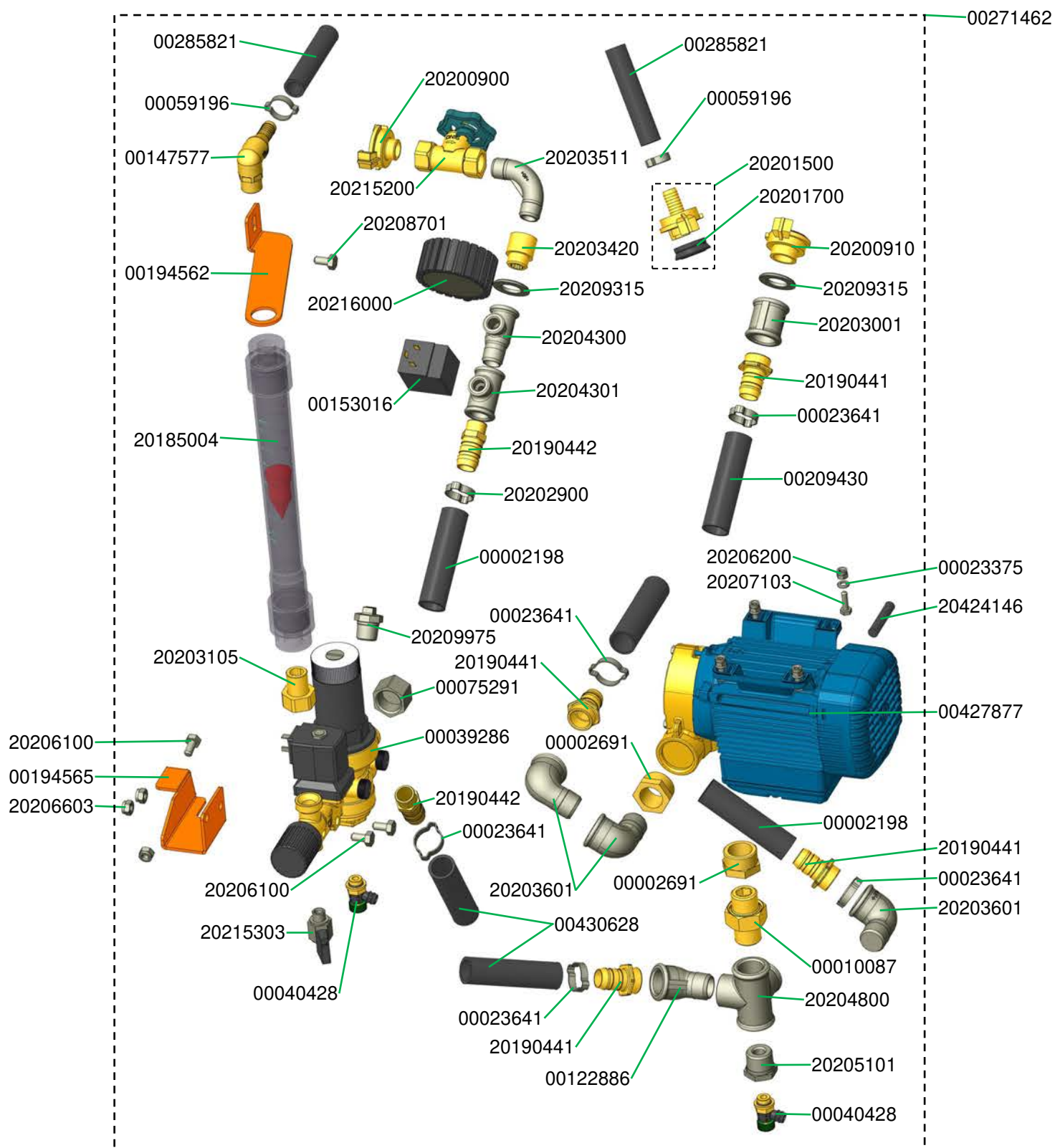
Luftkompressor COMP M-250 Ersatzteile  
Air compressor COMP M-250 spare parts

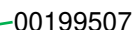


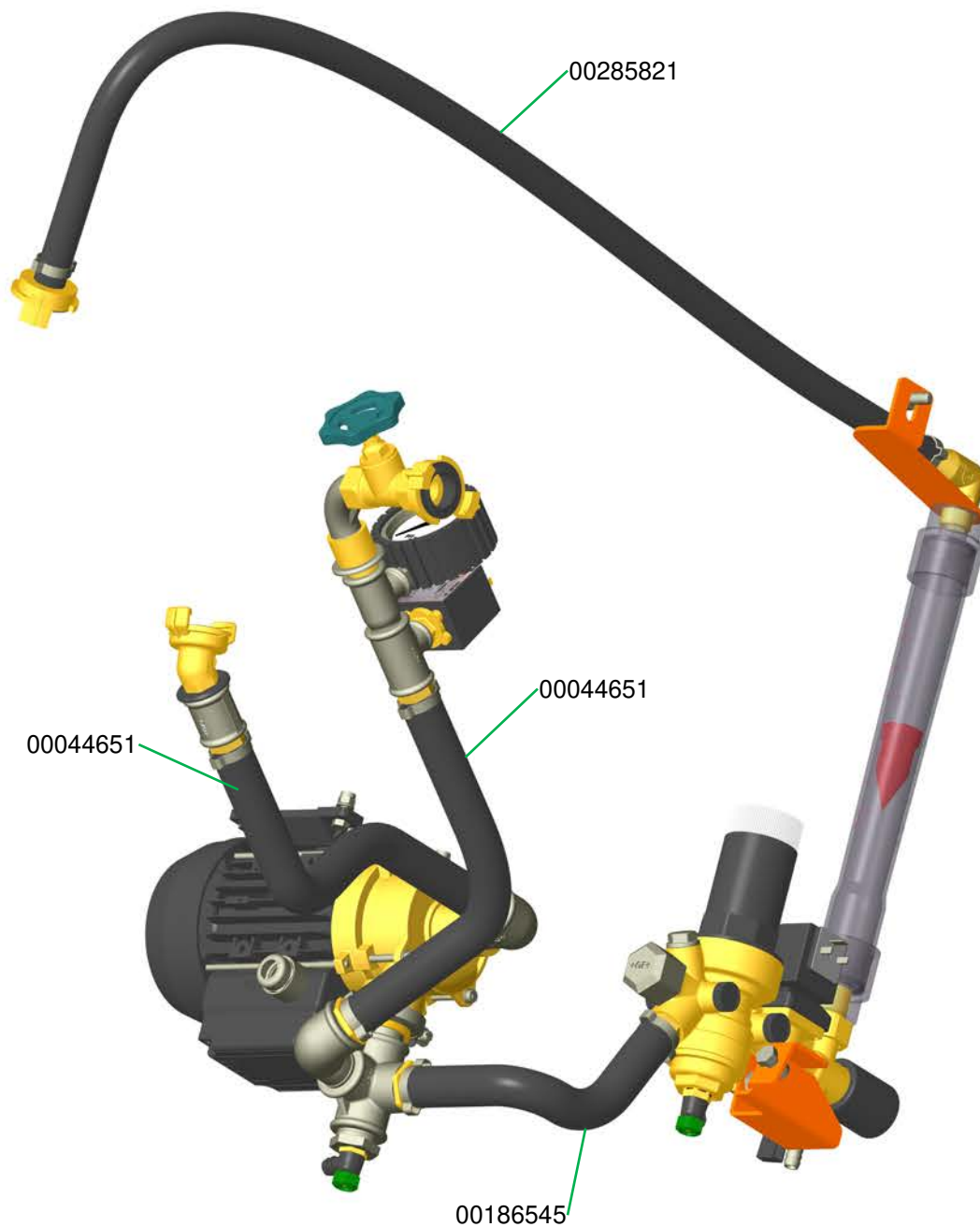
Wasserarmatur RITMO XL, 42 V Art.-Nr. 00199598  
 Water manifold RITMO XL, 42 V part number 00199598



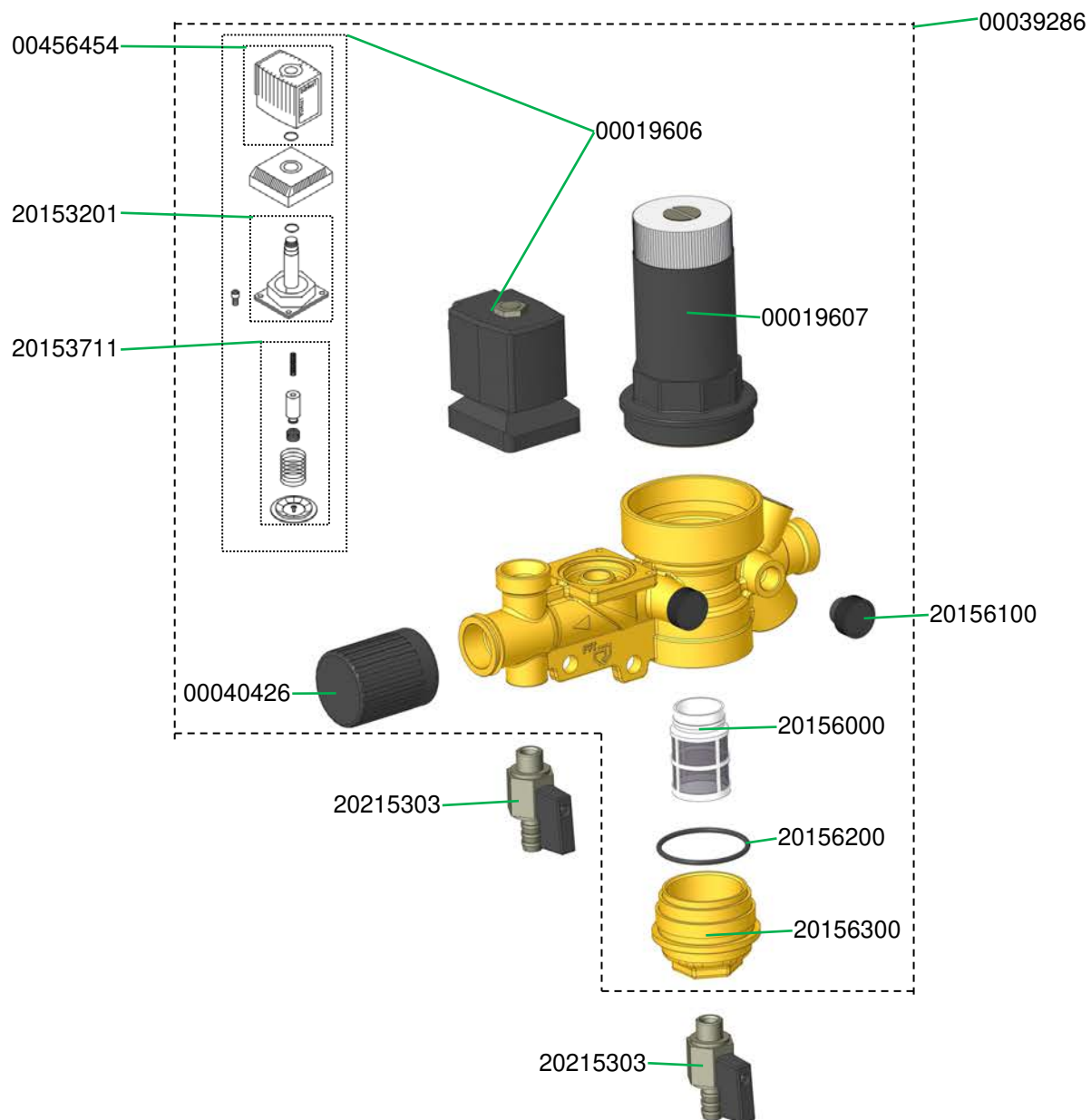
Wasserarmatur RITMO XL, 230 V, 3 Ph, 60 Hz Art.-Nr. 00271462  
 Water manifold RITMO XL, 230 V, 3 Ph, 60 Hz part number 00271462



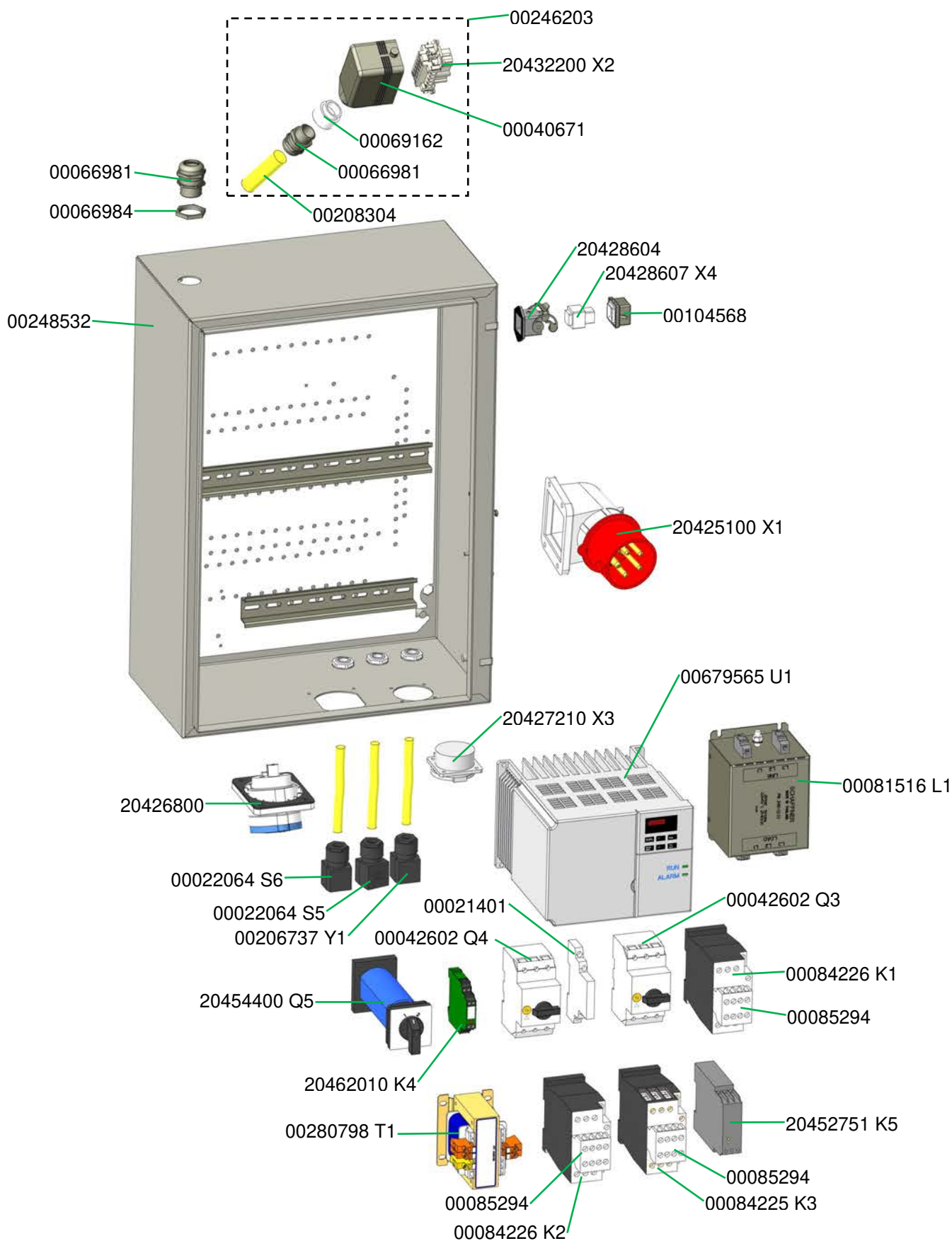




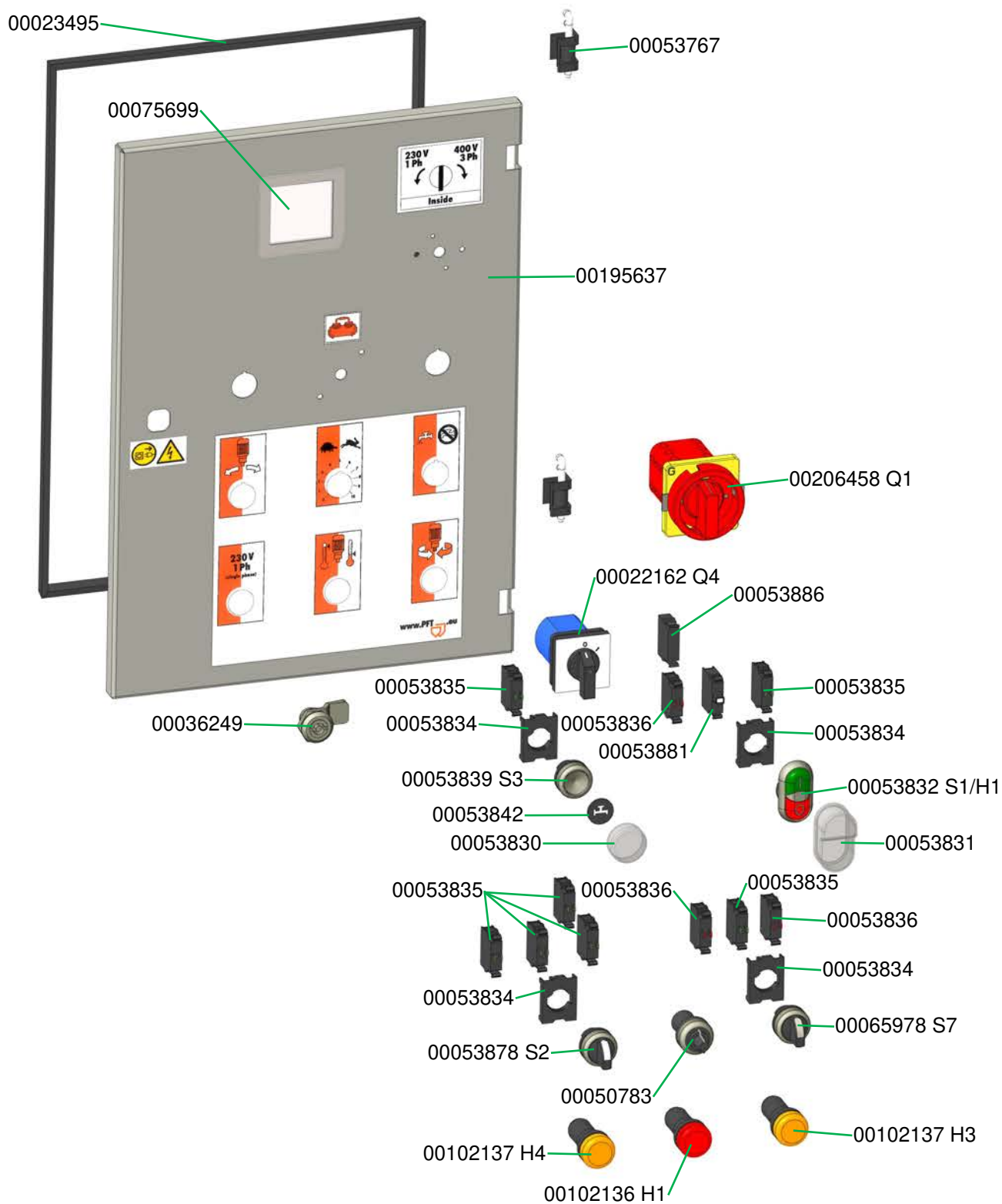
Armaturenblock DK06FN-1/2"E 42V, Art.-Nr. 00039286  
 Manifold block DK06FN-1/2"E 42V, part number 00039286



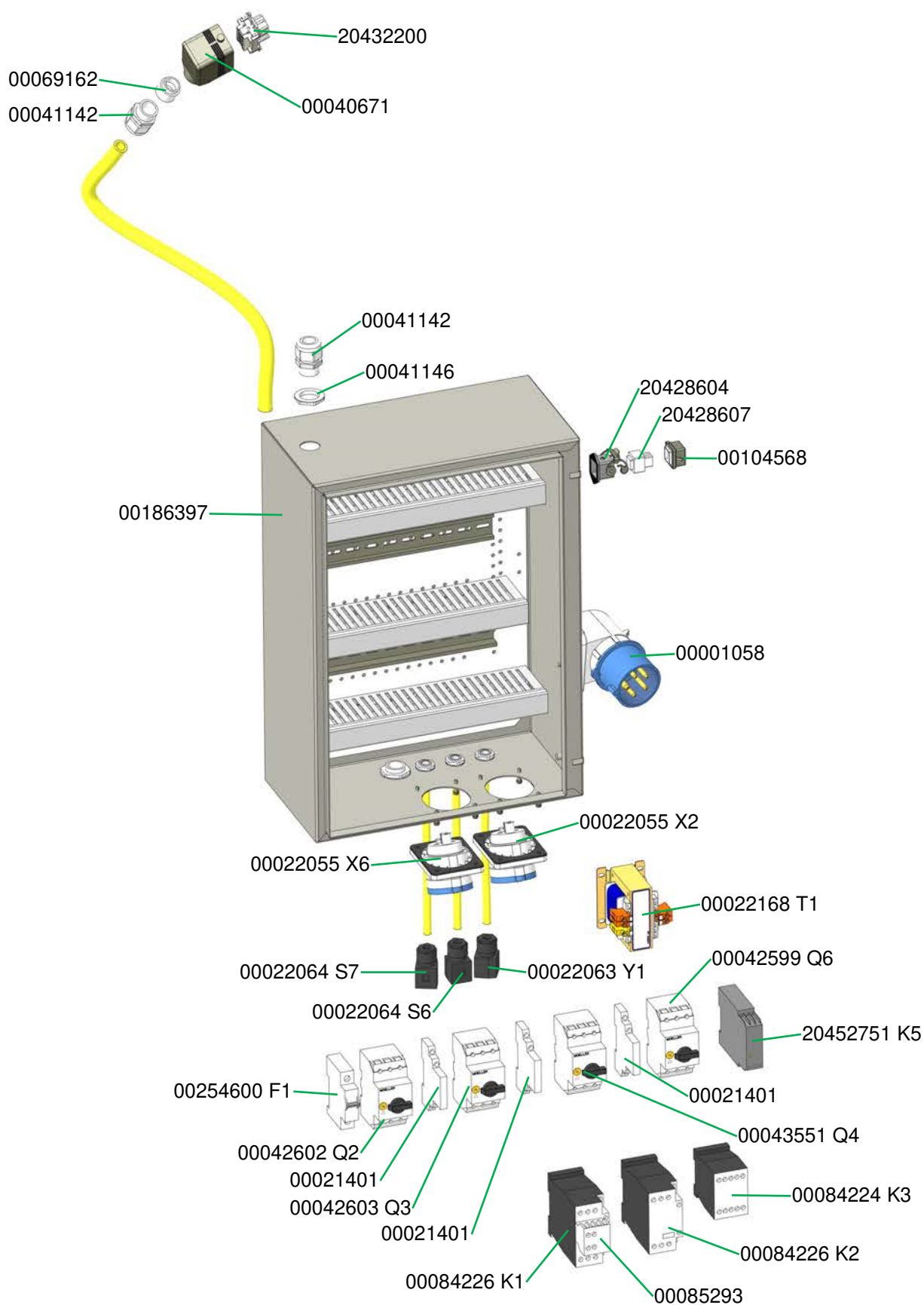
Schaltschrank RITMO XL, 230/400 V Art.-Nr. 00197827  
Control box RITMO XL, 230/400 V part number 00197827



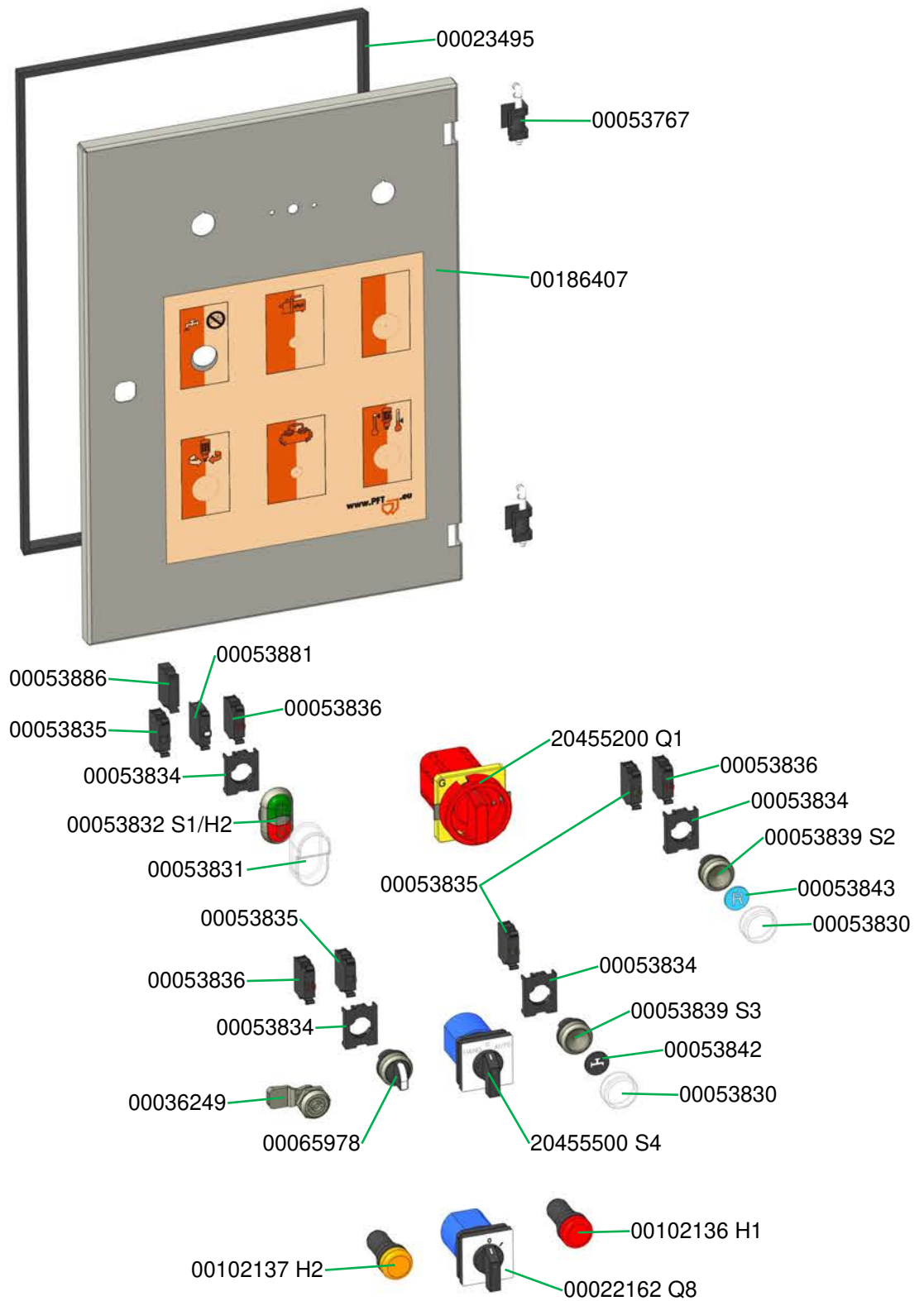
Schaltschrank RITMO XL, 230/400 V Art.-Nr. 00197827  
Control box RITMO XL, 230/400 V part number 00197827



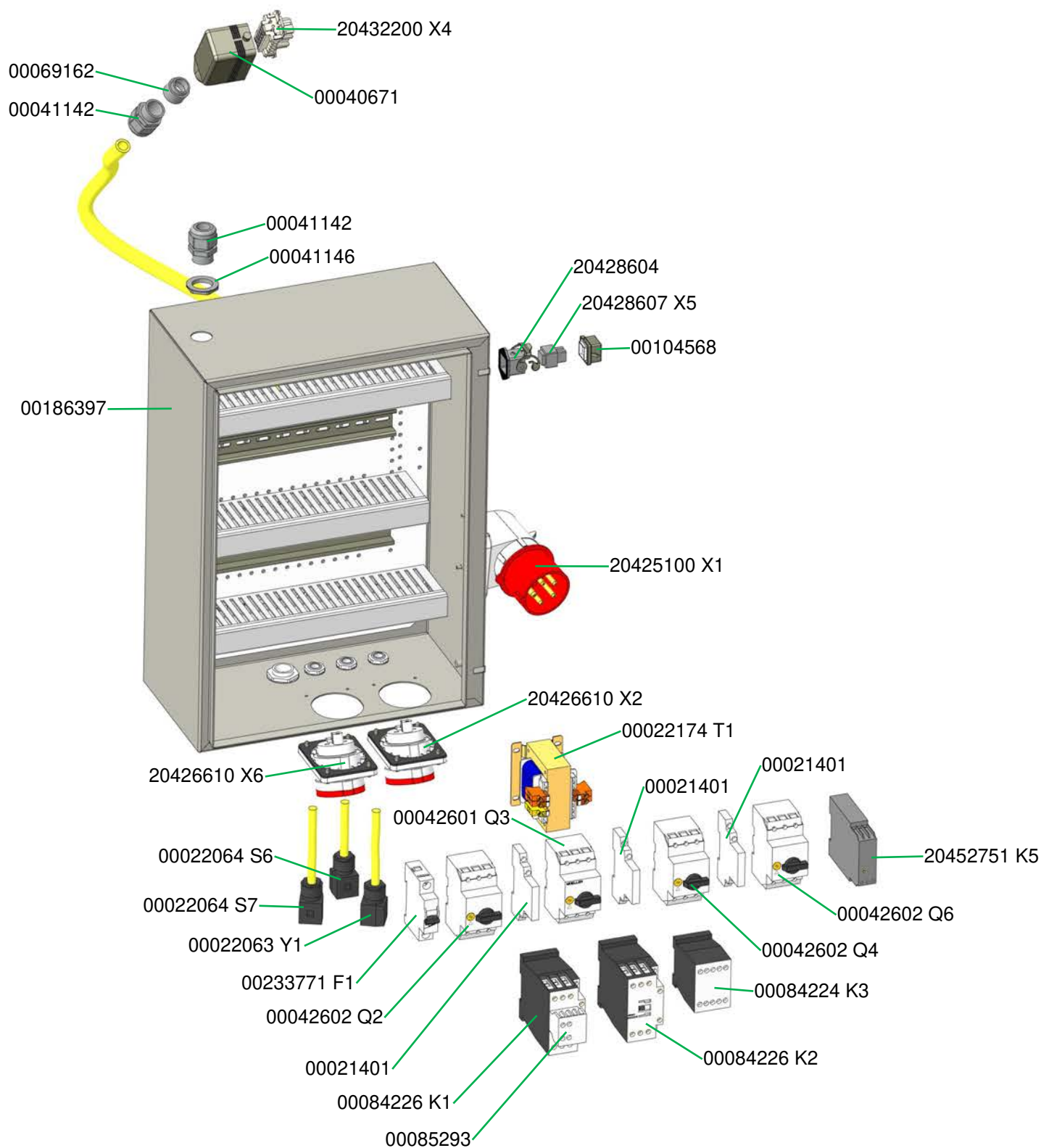
Schaltschrank RITMO XL, 230 V, 3 Ph, 60 Hz Art.-Nr. 00271520  
Control box RITMO XL, 230 V, 3 Ph, 60 Hz part number 00271520



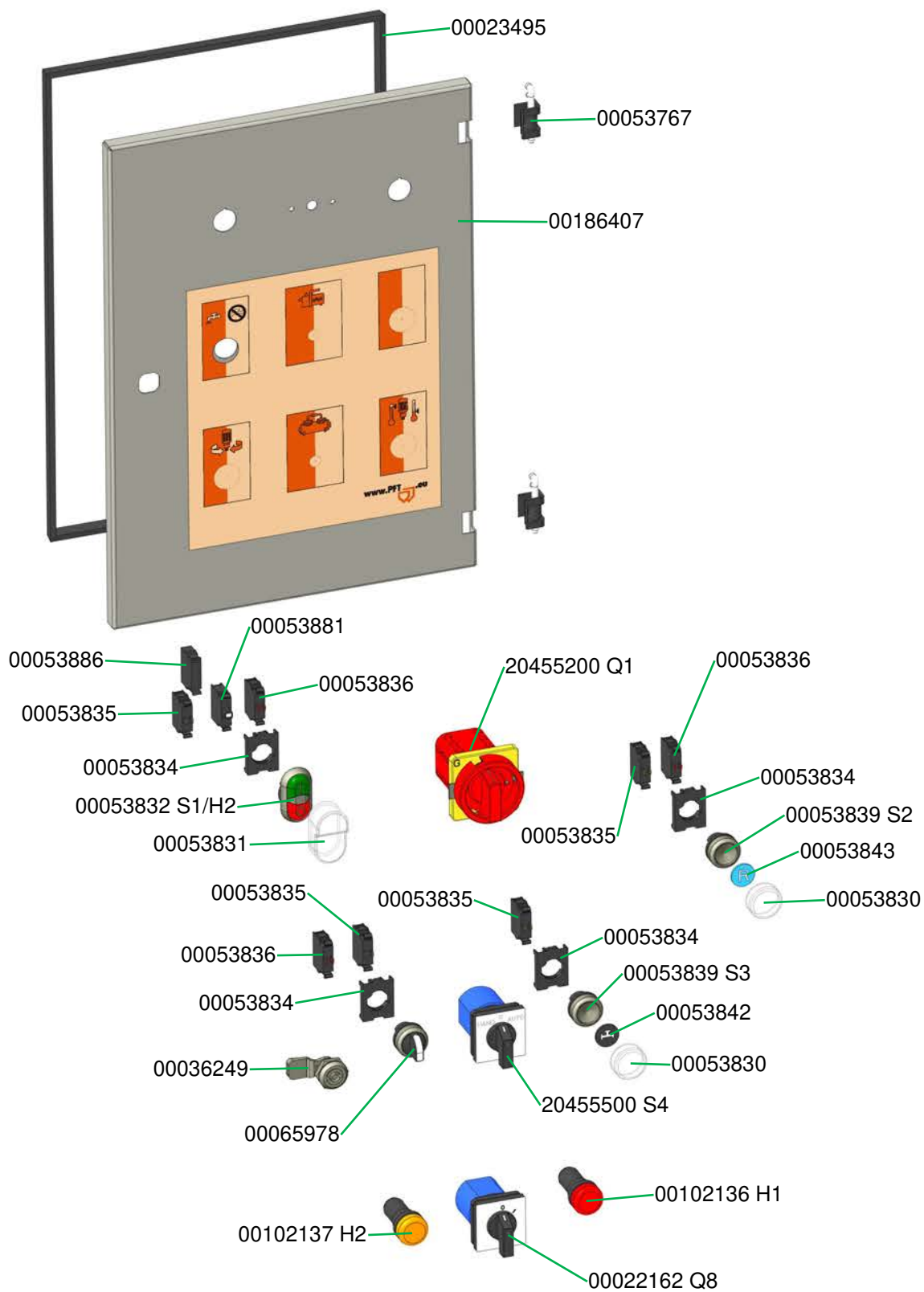
Schaltschrank RITMO XL, 230 V, 3 Ph, 60 Hz Art.-Nr. 00271520  
Control box RITMO XL, 230 V, 3 Ph, 60 Hz part number 00271520



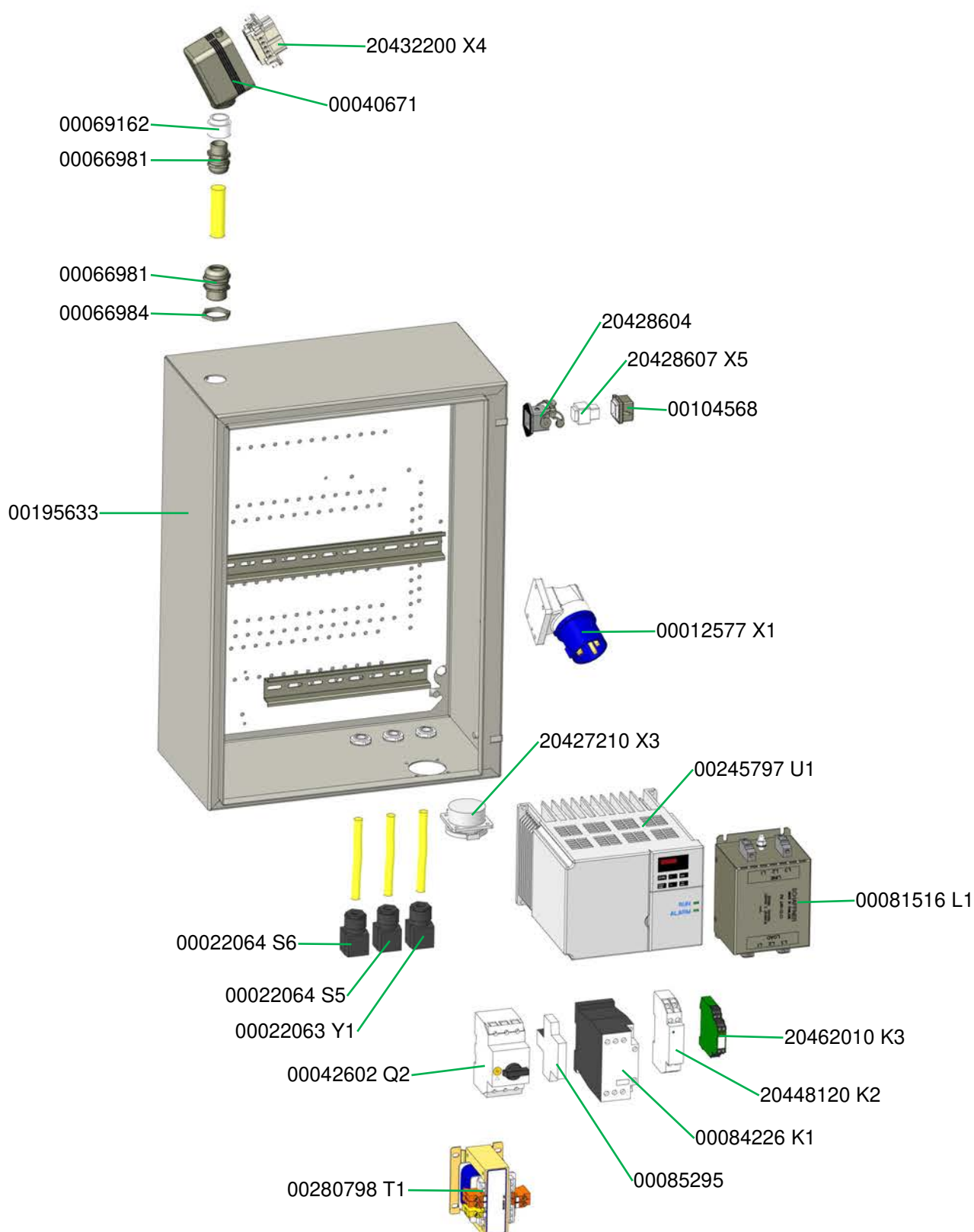
Schaltschrank Ritmo XL 400V Art.-Nr. 00186412  
Control box Ritmo XL 400V part number 00186412

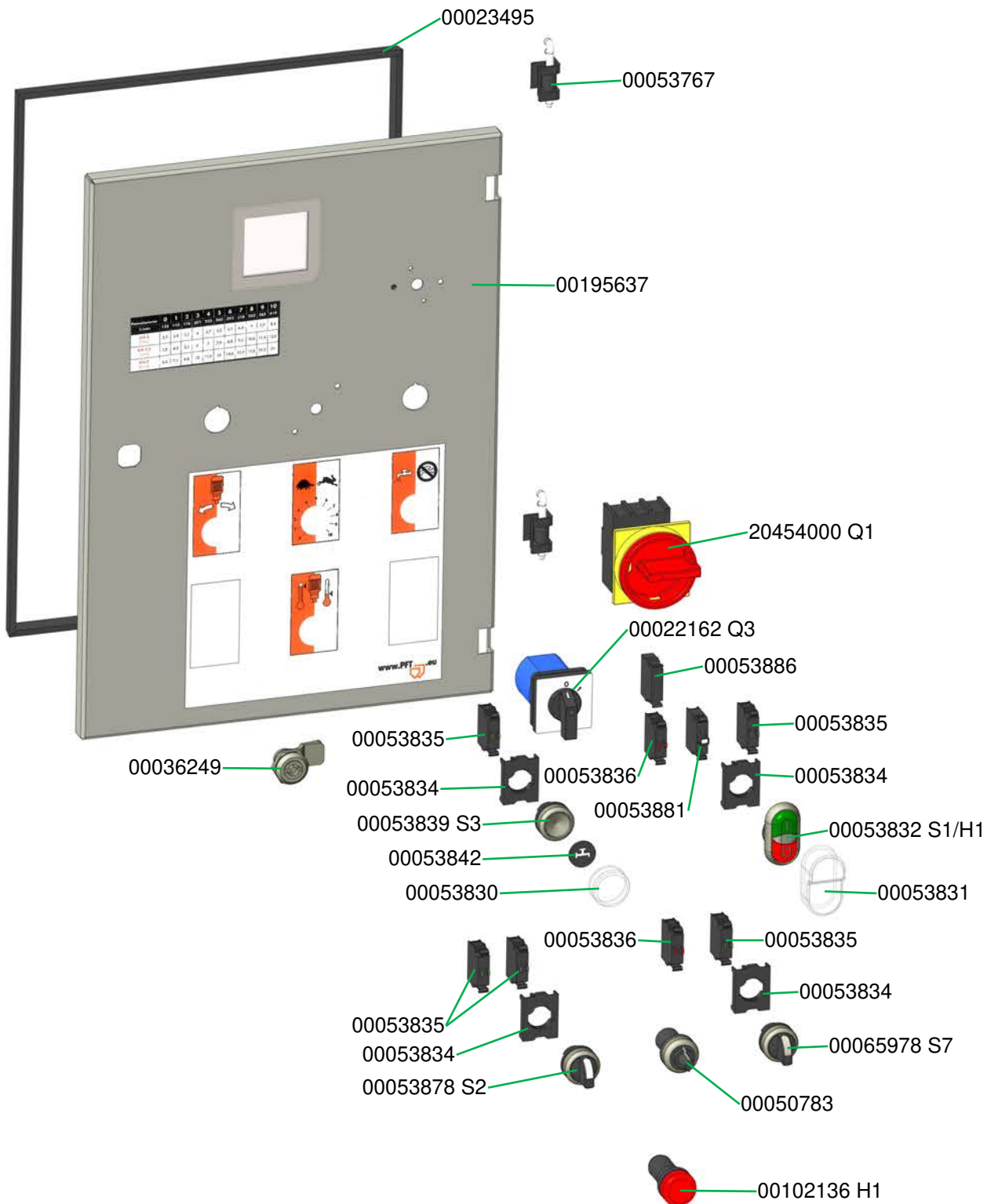


Schaltschrank Ritmo XL 400V Art.-Nr. 00186412  
Control box Ritmo XL 400V part number 00186412



Schaltschrank RITMO XL FC-230V Art.-Nr. 00195587  
Control box RITMO XL FC-230V part number 00195587





## Zubehör Accessories



Empfohlenes Zubehör / Ausrüstung finden Sie im PFT Maschinen- und  
Geräte-Katalog oder unter  
Recommended accessories / equipment can be found in the PFT machine  
and device catalog or at  
[www.pft.net](http://www.pft.net)



PFT – ALWAYS AT YOUR SITE



Knauf PFT GmbH & Co. KG  
Postfach 60 97343 Iphofen  
Einersheimer Straße 53 97346 Iphofen  
Deutschland

Telefon +49 9323 31-760  
Telefax +49 9323 31-770  
Technische Hotline +49 9323 31-1818  
[info@pft.net](mailto:info@pft.net)  
[www.pft.net](http://www.pft.net)