



Ersatzteilliste Spare parts list

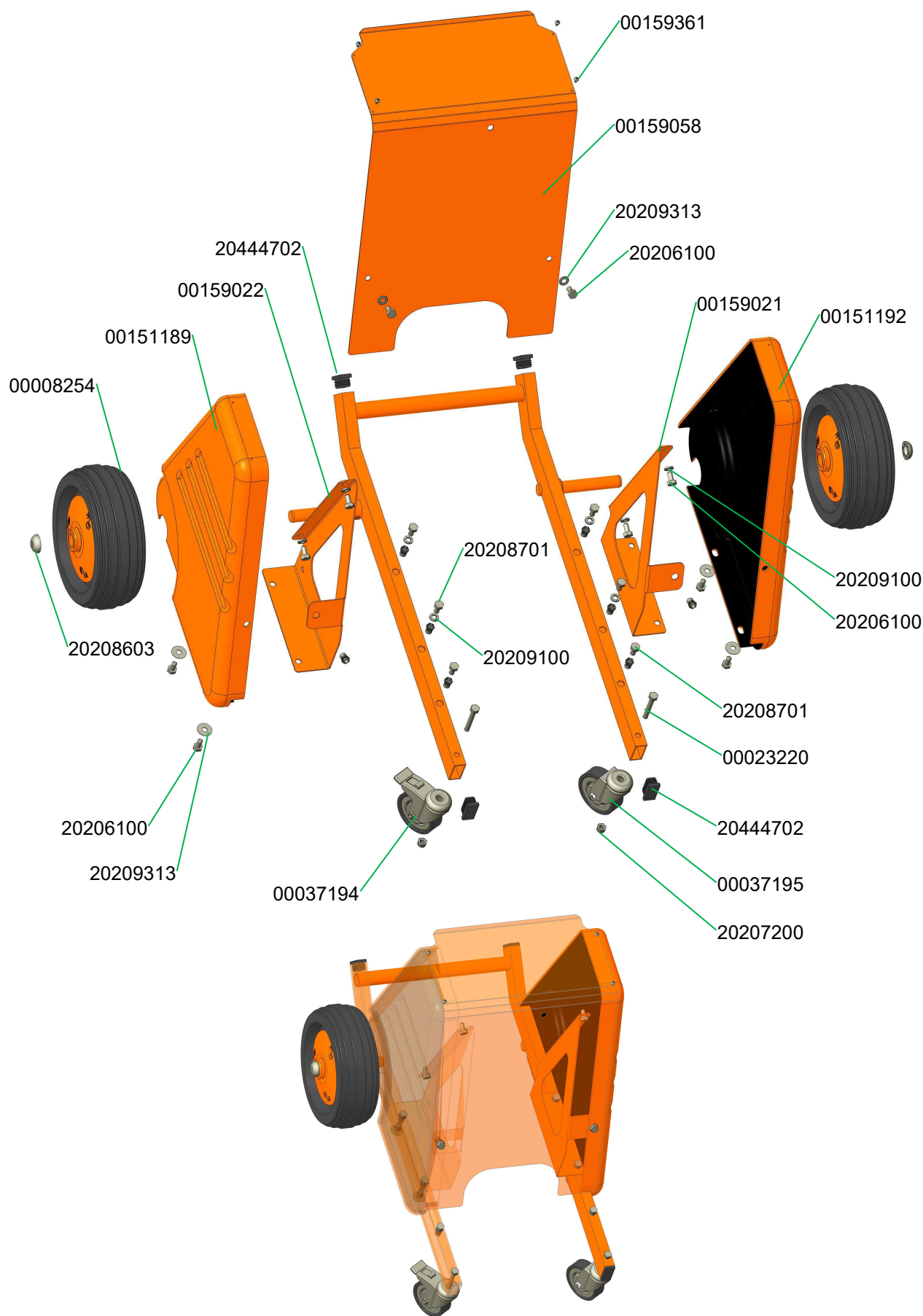
PFT Förderpumpe / conveying pump
SWING M



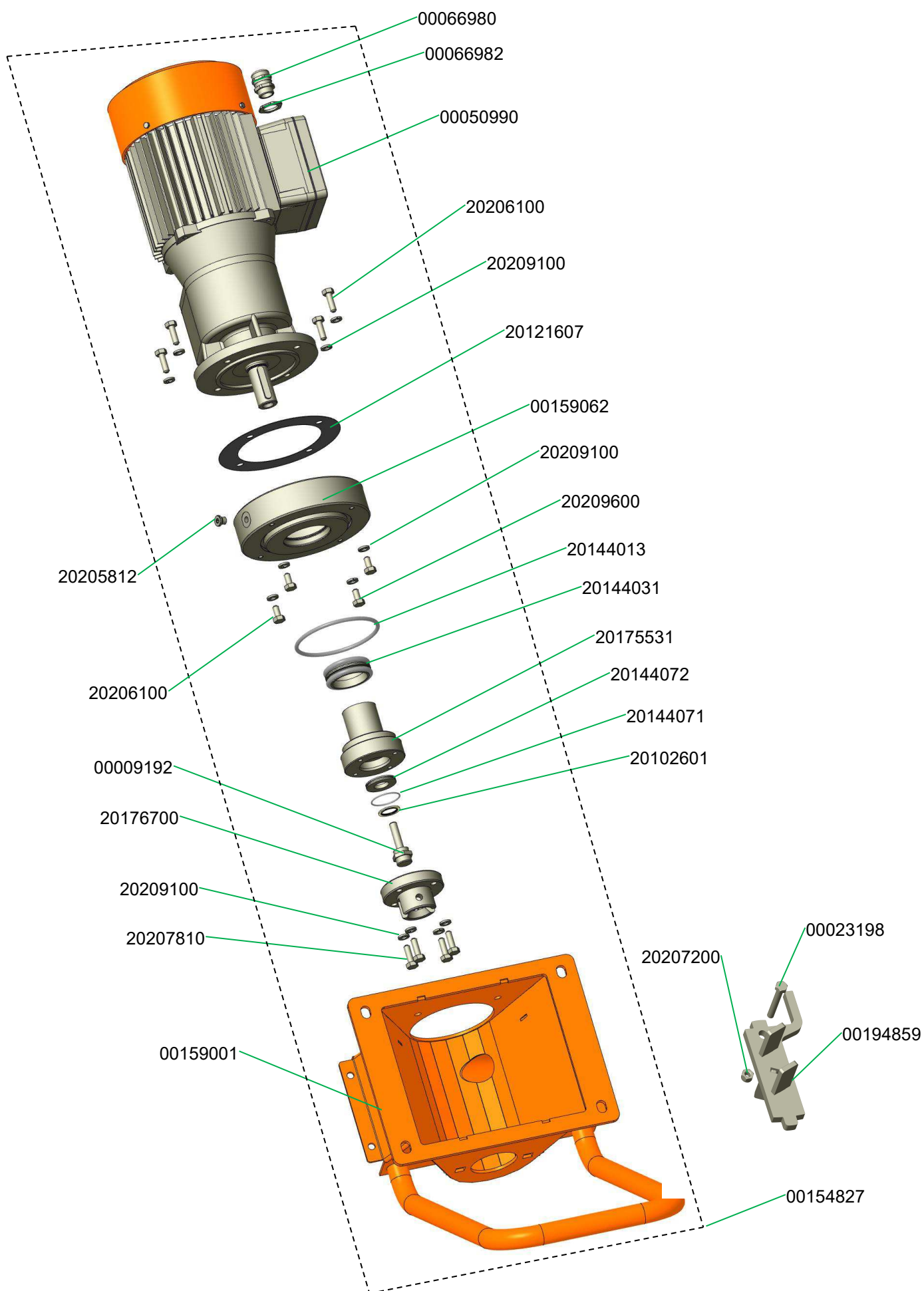
00151992 SWING M 0,5-9 l/min (W7)

00256639 SWING M 0,5-9 l/min (VA)

Chassis Swing M	3
Getriebemotor Swing M	4
Geared motor Swing M	4
Materialbehälter Swing M	5
Material hopper SWING M	5
Pumpeneinheit C 4-2 (W7) für SWING M Artikelnummer 00256689 bis 07.2020	6
Pump unit C 4-2 (W7) for SWING M part number 00256689 to 07.2020	6
Pumpeneinheit C 4-2 (W7) für SWING M Artikelnummer 00256689 ab 07.2020	7
Pump unit C 4-2 (W7) for SWING M part number 00256689 from 07.2020	7
Pumpeneinheit B 4-2 für SWING M Artikelnummer 00159064 bis 07.2020	8
Pump unit B 4-2 for SWING M part number 00159064 to 07.2020	8
Pumpeneinheit B 4-2 für SWING M Artikelnummer 00159064 ab 07.2020	9
Pump unit B 4-2 for SWING M part number 00159064 from 07.2020	9
Pumpeneinheit C 4-2 für SWING M Artikelnummer 00159324 bis 07.2020	10
Pump unit C 4-2 for SWING M part number 00159324 to 07.2020	10
Pumpeneinheit C 4-2 für SWING M Artikelnummer 00159324 ab 07.2020	11
Pump unit C 4-2 for SWING M part number 00159324 from 07.2020	11
Pumpeneinheit C 4-2 für SWING M Artikelnummer 00238215	12
Pump unit C 4-2 clampable for SWING M part number 00238215	12
Mörteldruckmanometer DN25 M-Teil DN25 V-Teil Artikelnummer 00102227	13
Mortar pressure gauge DN25 female part DN25 male part part number 00102227	13
Schaltschrank SWING M FC-230V Artikelnummer 00158813	14
Control box SWING M FC-230V part number 00158813	14
Schaltschrank SWING M FC-230V Artikelnummer 00158813	15
Control box SWING M FC-230V part number 00158813	15

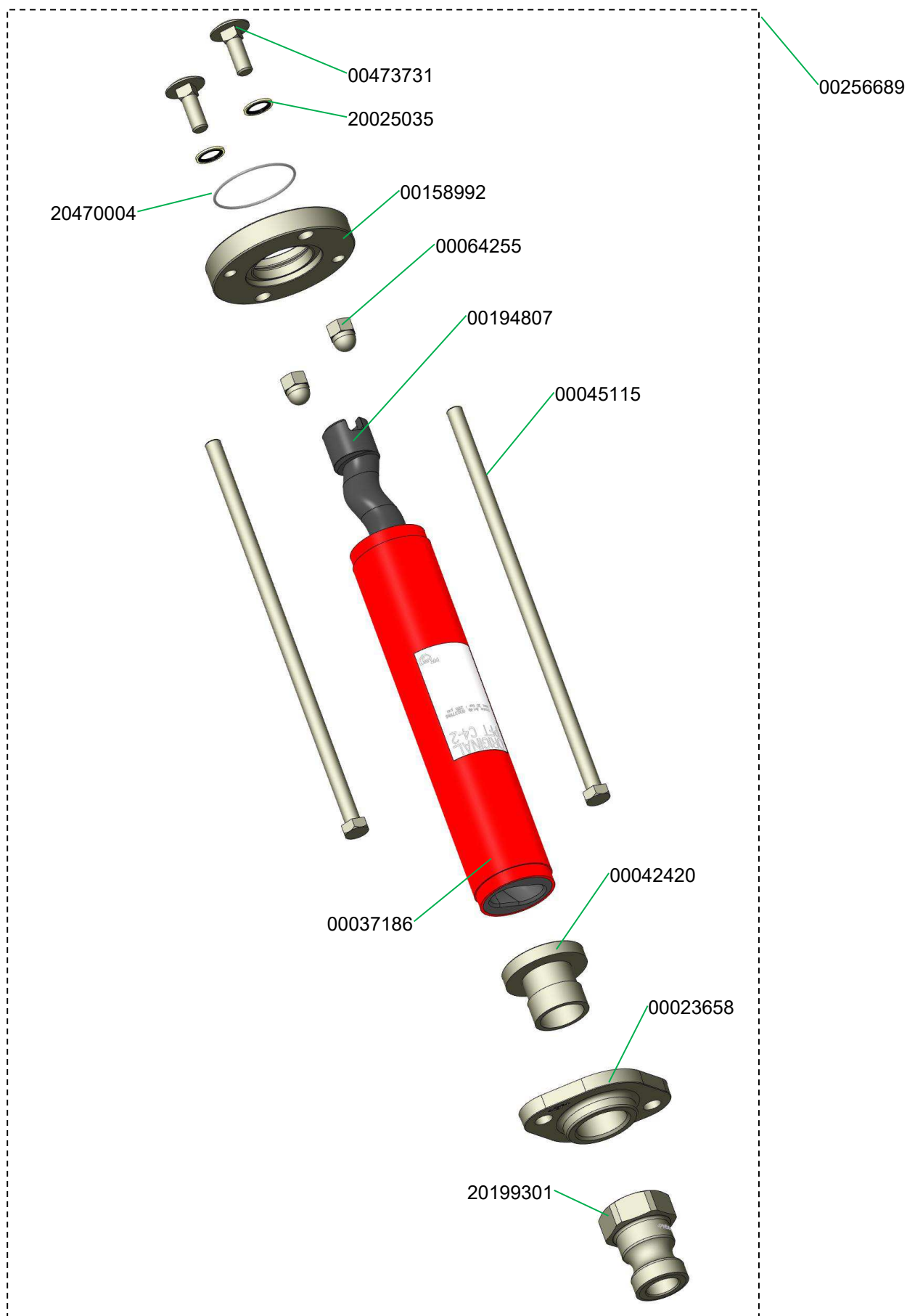


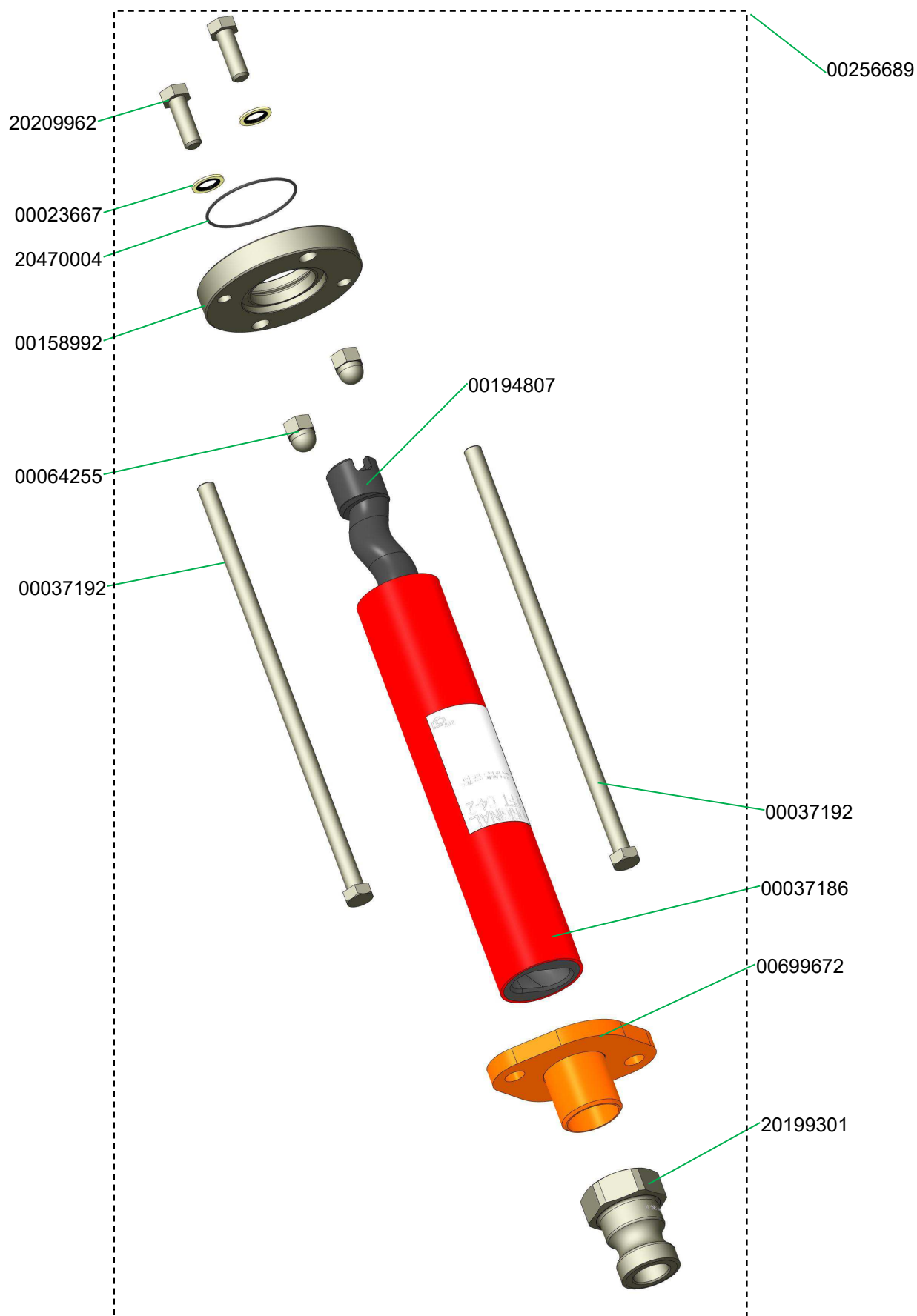
Getriebemotor Swing M
Geared motor Swing M

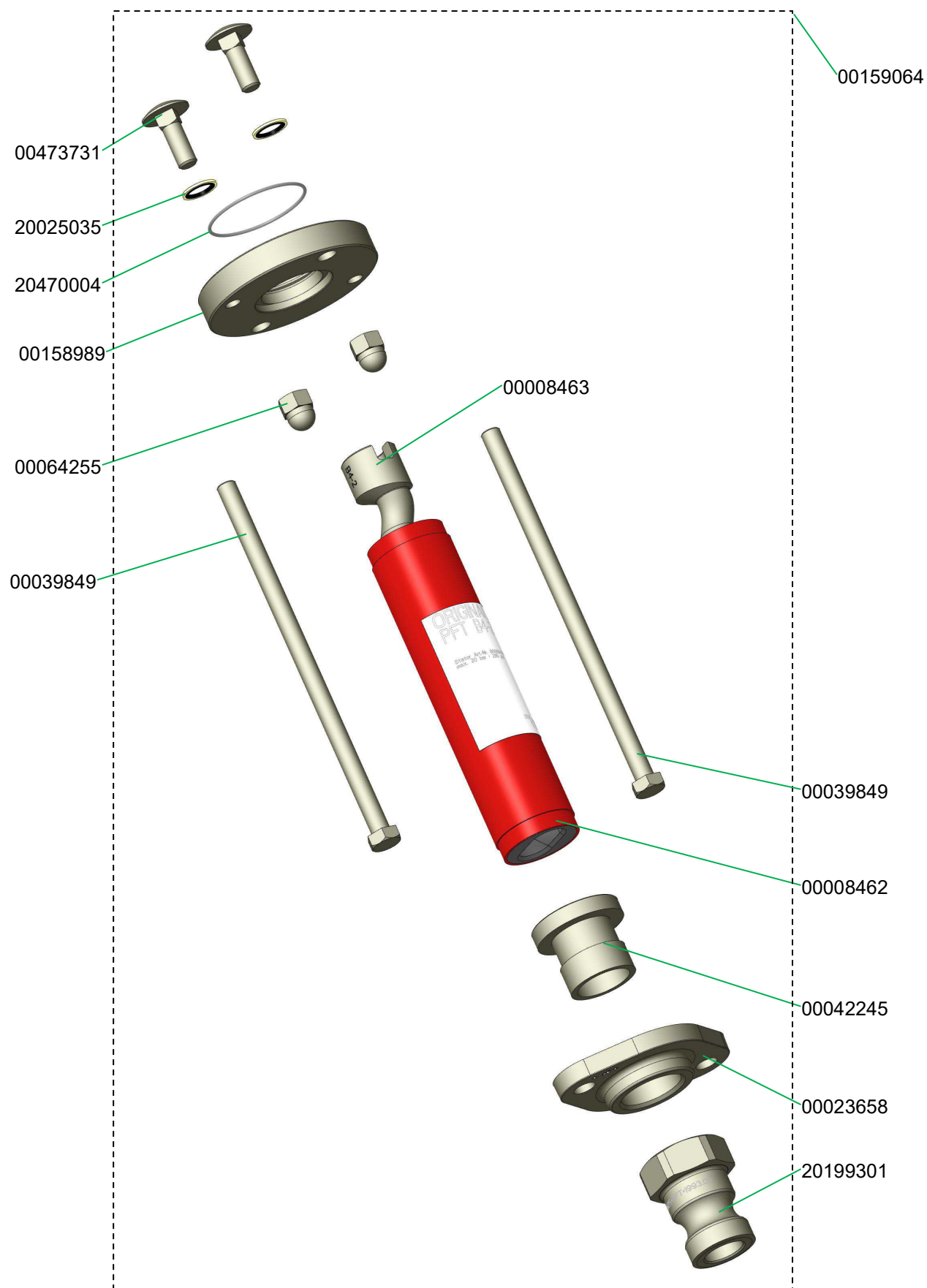


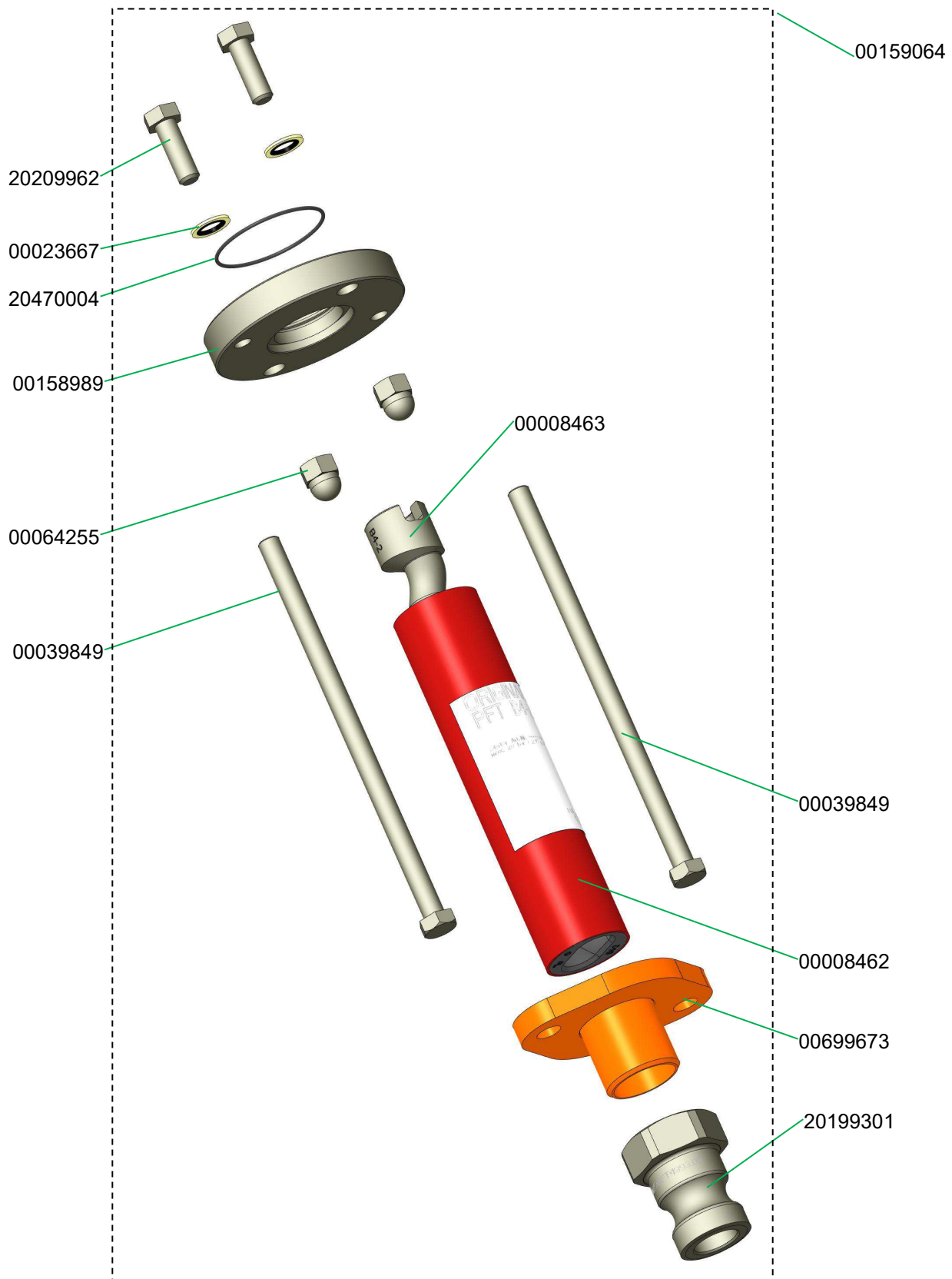
Materialbehälter Swing M
Material hopper SWING M

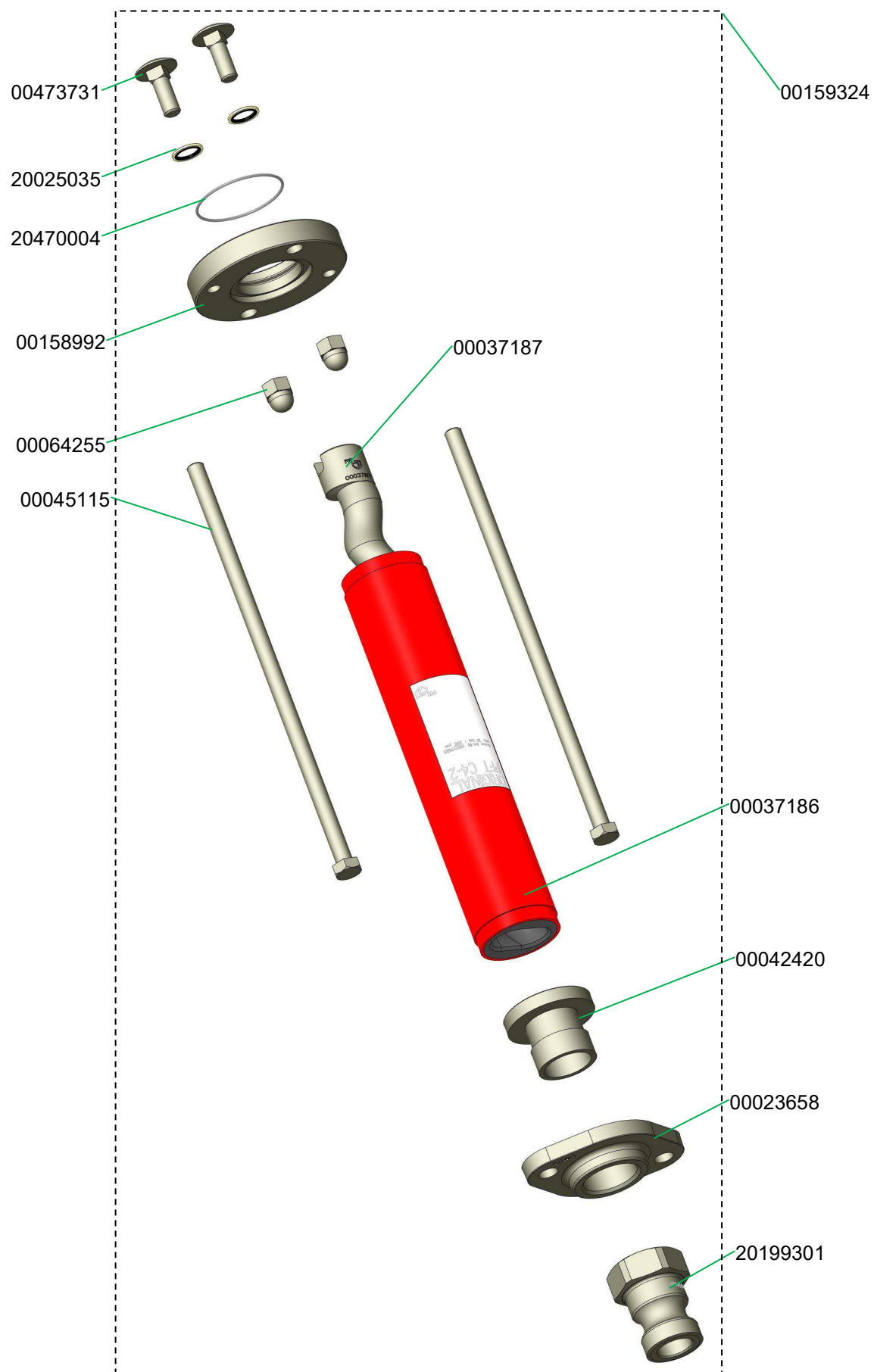


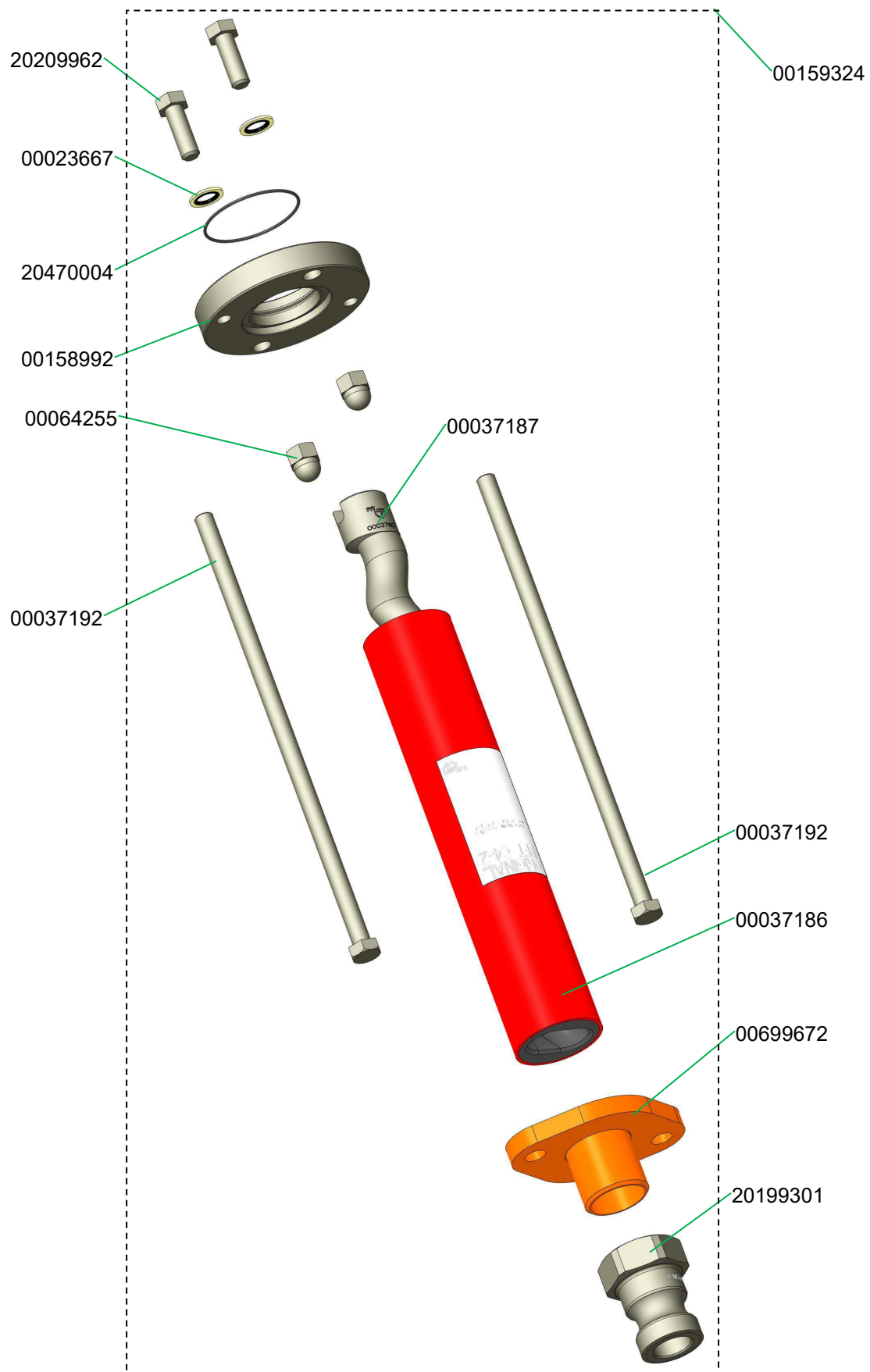


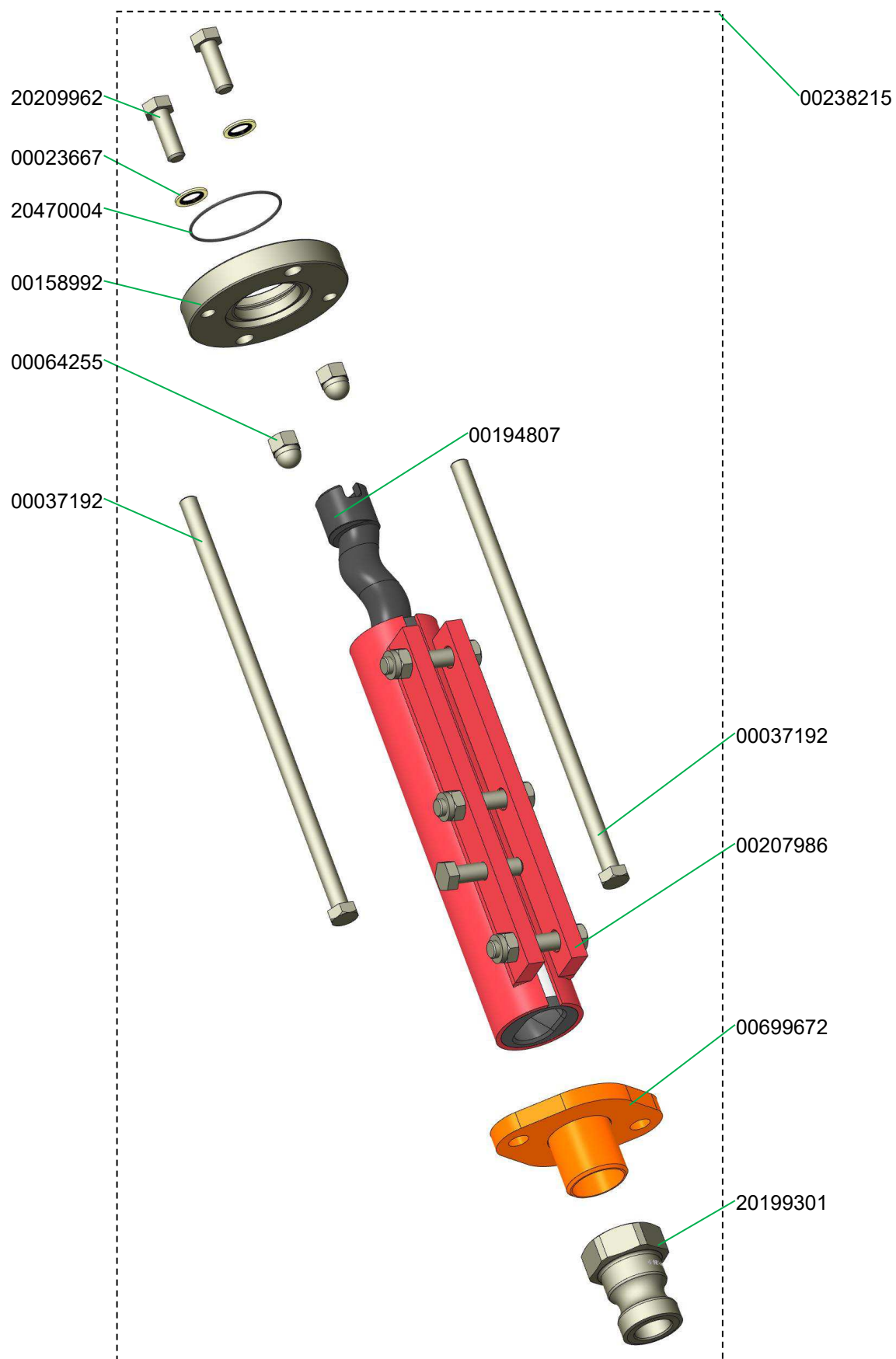


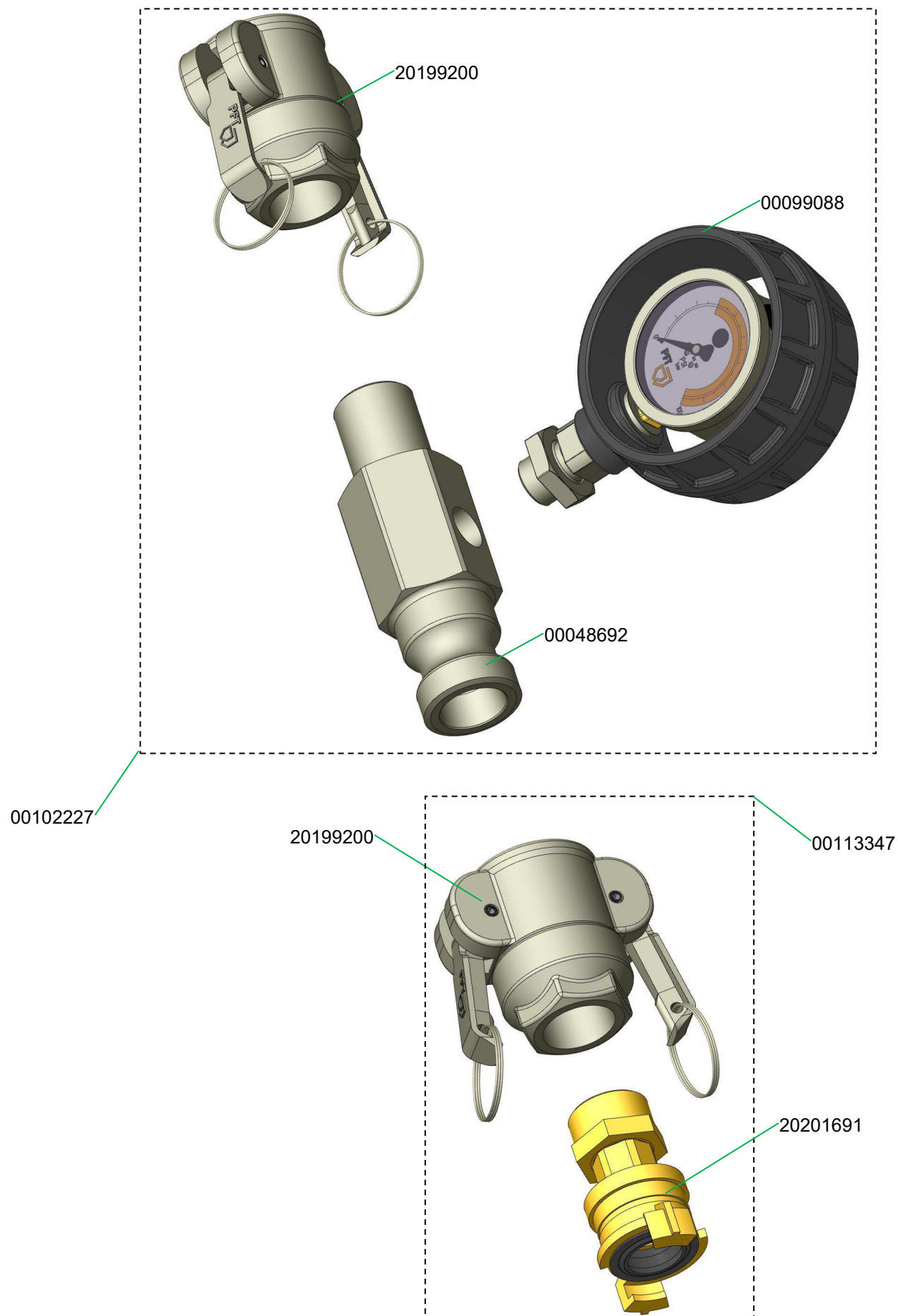




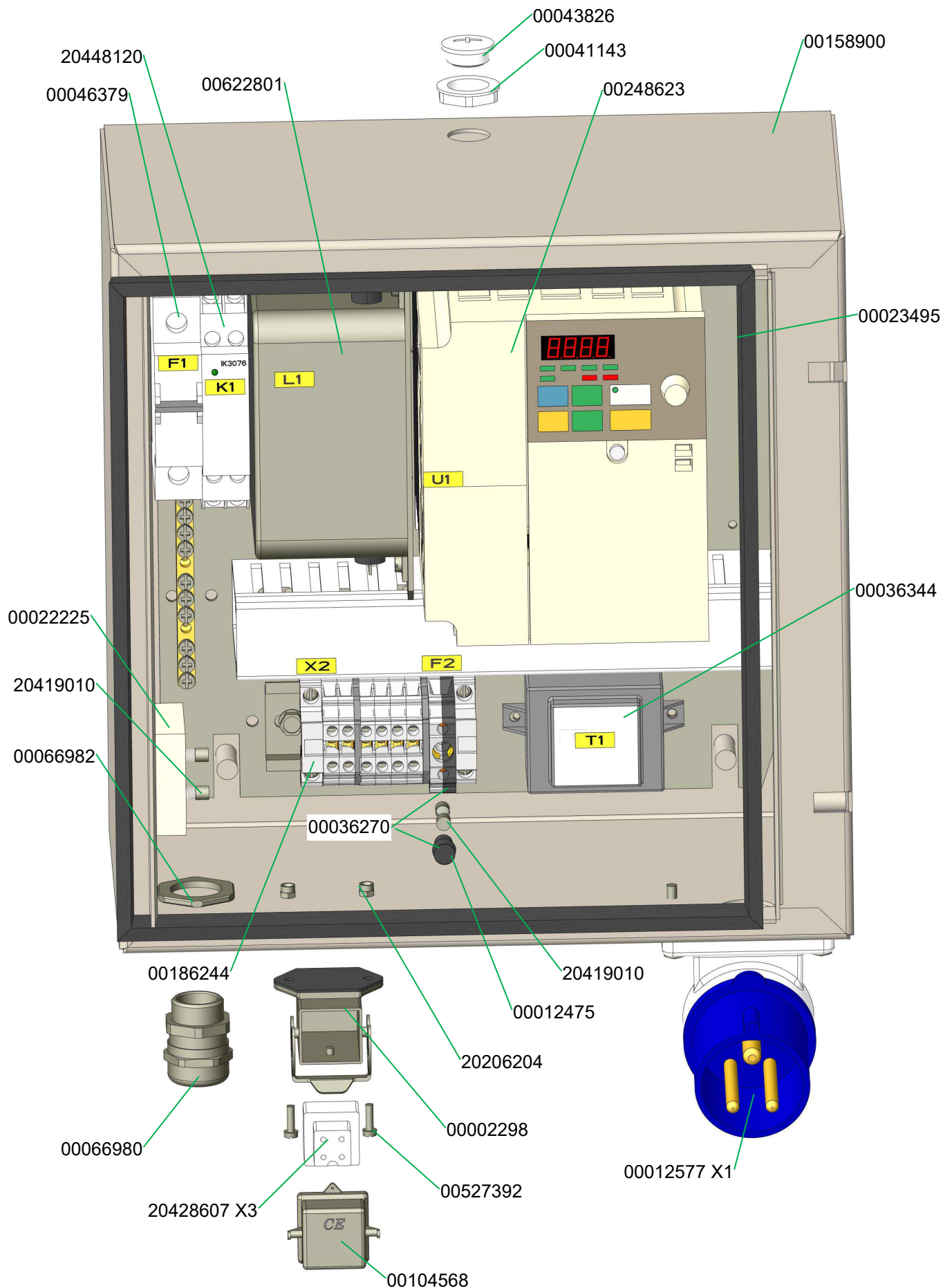












PFT - ALWAYS AT YOUR SITE



Knauf PFT GmbH & Co. KG
Postfach 60 97343 Iphofen
Einersheimer Straße 53 97346 Iphofen
Deutschland

Telefon +49 9323 31-760
Telefax +49 9323 31-770
Technische Hotline +49 9323 31-1818
info@pft.net
www.pft.net